

COMPANY PROFILE

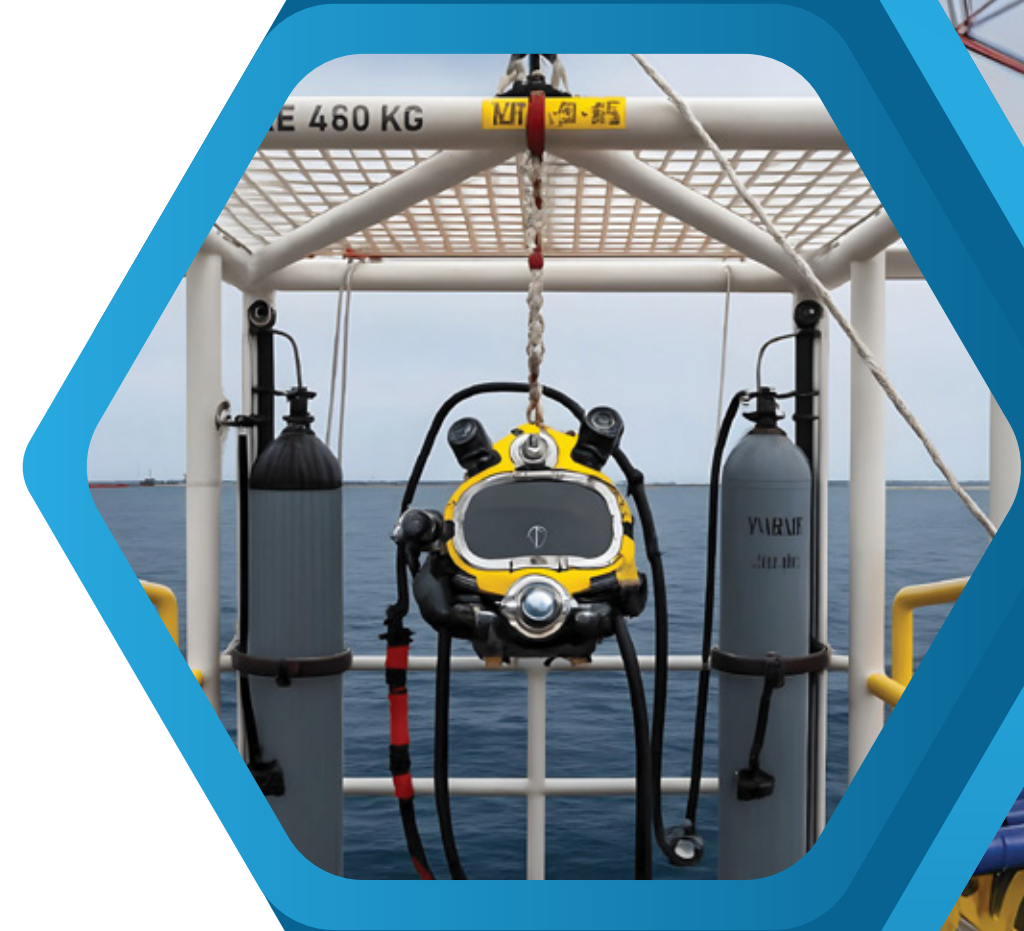


Table of **Content**

Meet Our Leaders	03	Assets Management System	10
Who We Are	04	Our Services	11
Our Greatest Asset	05	Offshore Conductor Centralisers	51
Our Mission and Vision	06	Advanced NDT Solutions	53
QHSE Excellence	07	Our Clients	68
Core Values	08	Contact Us	69
Why Choose PMS	09		



MEET OUR LEADERS

Driven by a leadership team with over 25 years of hands-on experience in the marine and subsea industry, Porto Marine Services brings a wealth of expertise and operational excellence, delivering safe, efficient, and high-quality solutions that align with international standards.



Mohamed Elsaid

CEO

With over 20 years of leadership in the marine and subsea industry, Mohamed Elsaid has successfully guided PMS to become a trusted partner for offshore and underwater solutions. His vision and unwavering focus on QHSE excellence ensure every PMS project exceeds client expectations.



Amr Hassan

COO

Amr Hassan brings extensive expertise in offshore project execution, with a proven record of leading complex subsea operations. His hands-on leadership and commitment to safety and client satisfaction drive PMS's ability to deliver cost-effective, high-quality solutions.

| Who We Are

Porto Marine Services (PMS) is a trusted provider of comprehensive marine, subsea, and diving services across the region. With a proved track record of operational excellence, PMS has established a reputation for delivering safe, reliable, and efficient solutions to the offshore, oil & gas, and renewable energy sectors.

Driven by a culture of innovation, QHSE excellence, and technical expertise, we ensure that every project is executed with precision, professionalism, and in full compliance with international standards.



Our Greatest **Asset**

Our People

At PMS, our greatest asset is our people. We are proud of our team of highly skilled professionals who bring passion, expertise, and dedication to every project.

Our commitment to excellence is reinforced by our Competence Management System (CMS), managed by OPITO-certified Assessors and Verifiers. This ensures that every individual is trained, assessed, and verified to the highest international standards, maintaining operational excellence, safety, and reliability at all times.





Our **Mission:**

We deliver world-class marine and subsea solutions built on safety, quality, and integrity. By upholding the highest HSE standards as the cornerstone of our operations, we enable our clients to achieve operational excellence with confidence and trust.



Our **Vision:**

To expand our expertise in the subsea and oil & gas sectors globally, setting new benchmarks of unparalleled quality. We strive to pioneer the development and implementation of advanced subsea solutions and technologies, while investing in artificial intelligence to better serve our clients' evolving needs.



QHSE Excellence

Quality, Health, Safety, and Environment (QHSE) are the foundation of every PMS operation. We maintain a zero-incident culture through rigorous procedures, continuous training, and strict compliance with international standards.

Our Integrated Management System (IMS) ensures operational excellence while safeguarding our people, clients, and the environment. Every project begins with a comprehensive risk assessment and safety planning process.

ISO 9001 & 14001, 45001 Certified



| Core Values |

Safety First

We never compromise on the safety of people, assets, or the environment.



Excellence

We pursue the highest standards in every aspect of our work.



What Drives Us Forward

Innovation

We embrace new technologies and smarter solutions for maximum efficiency.



Teamwork

We collaborate, support, and respect one another to achieve success.



Sustainability

We operate responsibly to protect future generations.



Integrity

We act with honesty, transparency, and ethics in all operations.



Why Choose PMS

With decades of combined experience and unwavering commitment to safety and quality, we deliver integrated marine solutions that meet industry standards and exceed client expectations.



Quality You **Can Trust**

We uphold the highest standards across all our services from offshore operations to equipment rental ensuring consistent, reliable performance every time.



Safety **First**

Round-the-clock project support and emergency response capabilities for critical marine operations.



24/7 **Support**

Uncompromising commitment to safety with zero-incident track record and rigorous safety protocols.

Assets Management System

In an industry such as oil and gas, where the stakes are high with the potential risks to human health, safety, and the environment, safe and reliable operations are a top priority. One of PMS's main pillars is **asset integrity**, which ensures that the people, processes, systems, and resources that deliver integrity are in place, in use, and will perform well when needed over the whole life cycle of the asset.

That's why **PMS** has **NAMS**, a **cloud-based content management** system, to support diving, marine planned maintenance equipment operations while tracking inventory, providing reports, and assisting in remote auditing operations.

It's not only for coordinating equipment maintenance but also for providing reduced administration tasks for dive teams, compliance with international diving equipment requirements (**IMCA**), and project management scheduling.

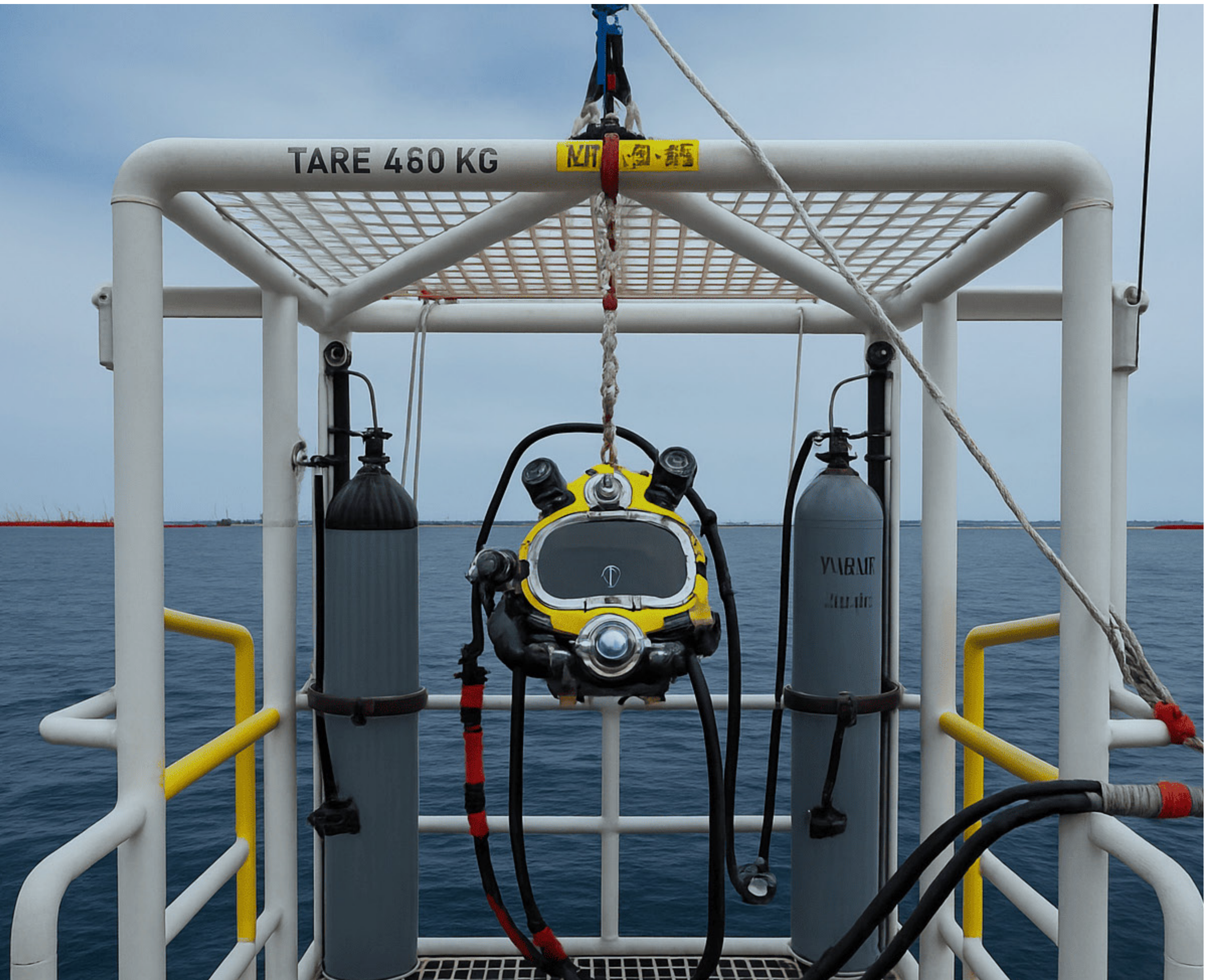
With this System, **our client** will have **full access** to **monitor** and **track** our equipment and personnel on board or in the running project in real-time. This technology will provide you with valuable insights and ensure efficient operations.

**TOTAL CONTROL.
REAL-TIME VISIBILITY.
ABSOLUTE RELIABILITY.**



OUR SERVICES

Porto Marine Services provides end-to-end marine and offshore solutions, combining technical expertise, certified personnel, and state-of-the-art equipment to deliver exceptional results for complex marine projects.



| Offshore **IRM Services**

Porto Marine Services delivers comprehensive Offshore IRM (Inspection, Repair & Maintenance) services, ensuring asset integrity, operational reliability, and extending the service life of offshore facilities.





Underwater NDT Inspection

Advanced ultrasonic, magnetic particle, and visual inspection techniques, deployed by divers or ROVs, in full compliance with international



Subsea Hydro-Testing & Pigging

Pipeline integrity verification and leak detection for safe and reliable operations.



Pipeline Repairs with Smart Flanges & Split Sleeve Clamps

Permanent and leak-proof repair solutions using cutting-edge technology.



Sectional Pipeline Replacement

High-strength mechanical connectors for welding-free replacements.



Debris Clearance & Removal

Our ROV and diver teams ensure safe navigation and operational access to offshore infrastructure through debris clearance and removal.



Splash-Zone Protection & Repairs

Specialized measures to mitigate corrosion and fatigue in high-exposure areas.



Pipeline Bypass Solutions

Emergency and permanent systems ensuring flow continuity.



Hot Tapping Services

Live pipeline modifications without shutdown, minimizing downtime.



SPM & Sea Berth Maintenance

Swivel refurbishment, chain inspections, and mooring integrity assessments.



Cathodic Protection & Anode Installation

Corrosion prevention and structural life extension.



UWILD & Hull Cleaning

Class-approved underwater surveys, marine growth removal, and compliance assurance services using ROVs and diver teams.

| Offshore **Construction**

Porto Marine Services delivers safe, efficient, and fully compliant offshore construction solutions, offering complete project support from planning to execution. Our comprehensive capabilities encompass all aspects of offshore construction, from initial surveys to complex subsea interventions, ensuring your projects are completed to the highest standards of quality and safety.





Pre-Engineering, Route & Site Surveys

Risk-based planning and precise execution.



Rehabilitation of Offshore Structures

Extending operational life and compliance.



Subsea Interventions

Including riser installations, tie-ins, J-tubes, and spool piece installations



Cable & Pipeline Stabilization

Free span correction and scour prevention to ensure long-term integrity.



Pipeline Laying Operations

Oil, gas, and water pipeline installation using advanced techniques.



Submarine Cable Laying

Precision cable installation for power and telecommunications.



Submarine Pipelines & Cables As-Laid Surveys

ROV-based visual and sensor-assisted inspections to assess condition, position, and integrity of subsea pipelines and cables. [offshore construction]



Submarine Structure Leveling Control Inspection

utilize advanced ROVs to ensure subsea structures are accurately positioned, leveled, and secure on the seabed. [offshore construction]



Submarine Structures Installation Assistance & Monitoring.

ROV-assisted support to ensure safe subsea structure deployment, with real-time monitoring. [offshore construction]

| Costal **Civil Works**

Porto Marine Services offers specialized coastal and marine civil engineering services, providing sustainable solutions for marine infrastructure and shoreline protection. Our comprehensive expertise encompasses all aspects of coastal engineering, from jetty construction to advanced scour prevention systems, ensuring durable and environmentally responsible marine infrastructure.





Jetty Construction

Safe, efficient, and environmentally sustainable berthing solutions.



Seawater Intake Systems

Design, construction, and preventive maintenance for desalination, power, and industrial facilities.



Protective Barriers & Breakwaters

Engineered defenses against erosion and wave impact.



Subsea Scour Prevention

Advanced mitigation to safeguard offshore assets.



Marine Concrete Structures

Inspection, repair, and maintenance for piers, quays, and breakwaters.

Professional Manpower Supply

Porto Marine Services provides highly qualified, certified, and experienced personnel, supported by our robust **Competence Management System (CMS)** in accordance with the latest IMCA C003 Guidance and OPITO Standards.

Competence Management System

In order to enhance the quality of our services, it is essential to have a highly qualified team. PMS properly implemented its own Competency Management System to monitor & enable a comprehensive picture regarding the level of experience of its workforce and skills within the company. As far as this CMS is concerned, the primary goal is safety-related areas as well as the technical skills required to properly fulfill the diving-related roles assigned as per the latest version of IMCA C003 Guidance & OPITO Standard.

The PMS's CMS allows the individual to document their experiences and qualifications and have them authenticated by appropriately authorized personnel (Certified Assessors & Verifiers) to use throughout PMS operational locations and the industry in general.





Diving Personnel:

- ✓ IMCA Air Diving Superintendent
- ✓ IMCA Air Diving Supervisor
- ✓ IMCA Certified Air Diver
- ✓ CSWIP 3.2 & 3.1 Inspection Divers
- ✓ Dive Technician
- ✓ Diver Medic Technician (DMT)



NDT & Inspection Personnel:

- ✓ 3.4U Underwater Inspector / Coordinator
- ✓ ACFM Operator – Level II
- ✓ FMD Operator – ASNT Level II
- ✓ CSWIP 3.9 Inspector



Client Representatives:

- ✓ Diving Client Representative
- ✓ Safety Client Representative
- ✓ Marine Advisor



Marine Personnel:

- ✔ Marine Superintendent
- ✔ Master Mariner
- ✔ Chief Officer
- ✔ Chief Engineer
- ✔ 1st, 2nd, and 3rd Officers
- ✔ DP Officers
- ✔ Mechanic
- ✔ Electrician



Lifting Operations Personnel:

- ✔ Appointed Lifting Person (AP)
- ✔ Lifting Supervisor
- ✔ Lifting Engineer
- ✔ Riggers – Certified Level III & Level II



Rope Access Personnel (IRATA Certified):

- ✔ Rope Access Supervisor – IRATA Level III
- ✔ Rope Access Technician – IRATA Level II
- ✔ Rope Access Technician – IRATA Level I



ROV Personnel:

- ✓ IMCA ROV Superintendent
- ✓ IMCA ROV Supervisor
- ✓ IMCA Senior Pilot Technician
- ✓ IMCA Pilot Technician – Grade I
- ✓ IMCA Pilot Technician – Grade II



Technical & Project Support:

- ✓ Project Manager
- ✓ Field Engineer
- ✓ Offshore Construction Engineer
- ✓ Project Engineer
- ✓ Subsea Engineer
- ✓ HSE Officer
- ✓ Marine Warranty Surveyor

Material Supply & Fabrication

Porto Marine Services offers comprehensive material supply and offshore fabrication services, supporting the demands of offshore construction, maintenance, and repair projects with reliable, high-quality components. Backed by an extensive inventory and specialized fabrication capabilities, we ensure that all materials meet IMCA, and international standards, guaranteeing operational integrity, safety, and long-term performance.

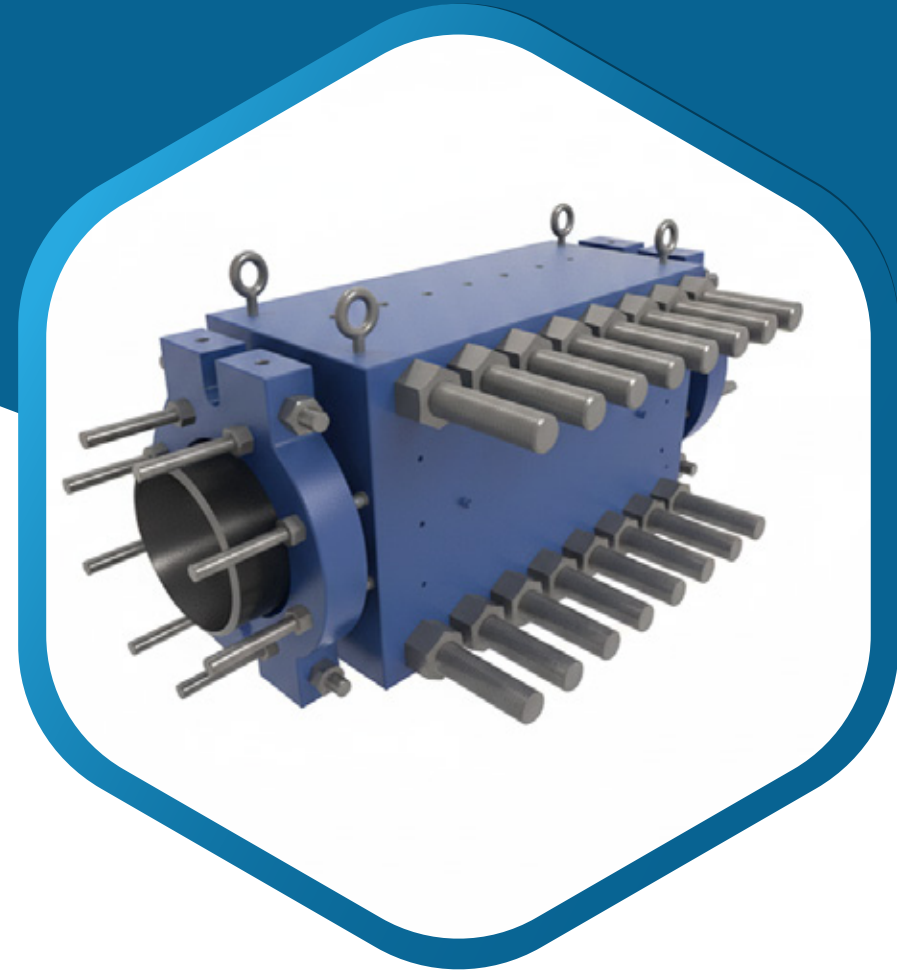




Structural Anodes



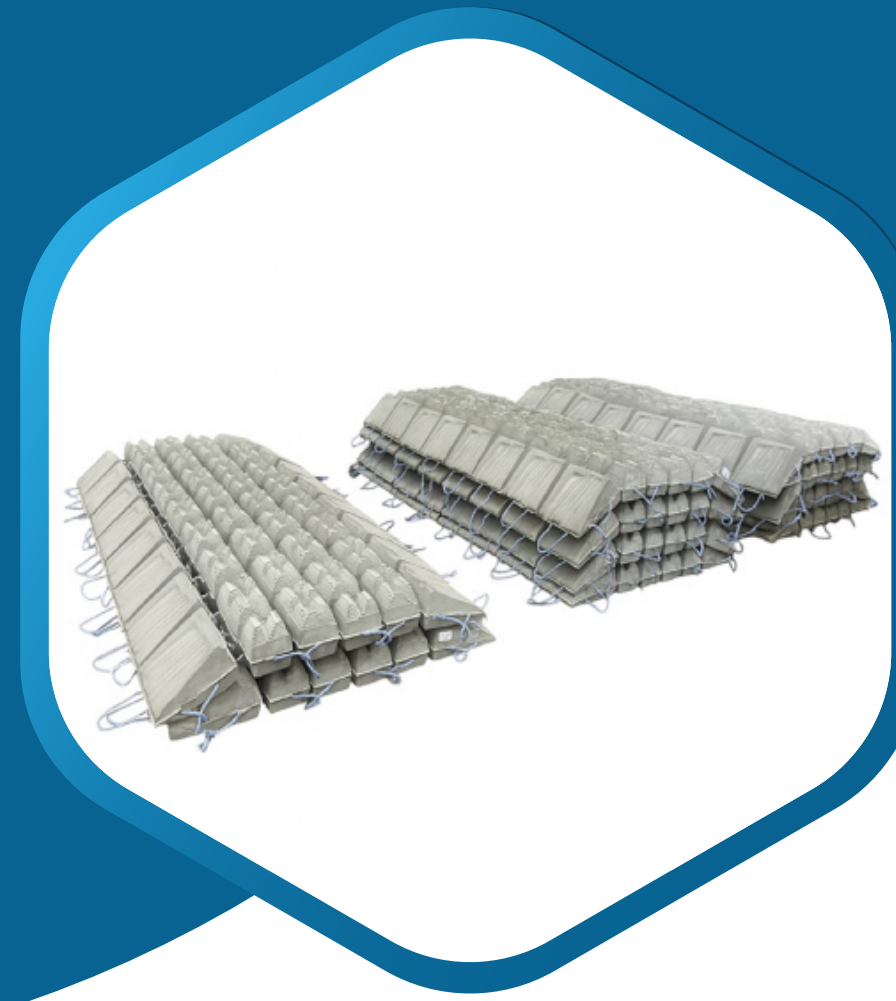
Grout Bags



Repair Clamps



Mechanical Connectors



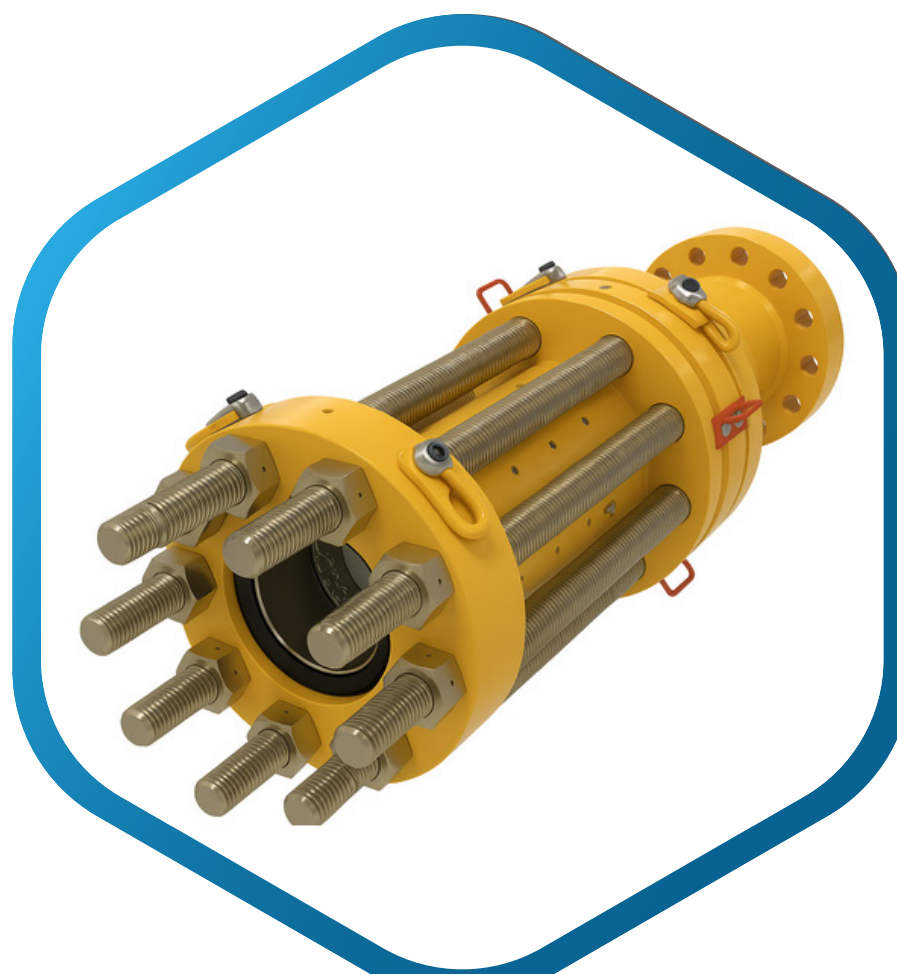
Concrete Mattresses



Piggyback Clamps



Marine Fenders



Smart Flanges

Offshore & Onshore Fabrication Services

Offshore & Onshore Fabrication Services Custom engineered fabrication solutions delivered in strict compliance with international standards, including NDT inspection requirements, to ensure maximum durability and safety such as:





Boat Landing Structures



Monkey Ladders



Repair Clamps



Mechanical Anchors



Spool Pieces



Custom Fabrications

| Equipment Rental

Professional equipment and accessories available for rental with full maintenance records and certifications



**Air Diving
Equipment**



**Diving Decompression
Chamber (ABS Classed,
IMCA Compliant)**



**Three Diver Control
Panel (ABS Classed,
IMCA Compliant)**



**Scuba Replacement
Package (2,3 Divers)**

**Air Diving
Equipment**



**Machinery Container
(ABS Classed, IMCA
Compliant)**



**Standby Diver
Container**



**LARS (Launch &
Recovery System)**



Davit (Second Recovery)



LP Industrial Compressor

**Diving & Work
Boats**



**(FTA & PPA)
LIBRA 6500 Boat**



**(FTA & PPA)
Rigid RHIB ASIS
7.2 mtr Boat**

**Subsea
Inspection
Tools**



**Automated Ultrasonic
Testing (AUT)**



MPI Unit System 12



Cygnus under Water MK4 (UT)



Bathy Corrometer



**U31D Subsea ACFM®
Inspection Technology**



**Cygnus FMD Unit ROV deployed
and diver deployed**

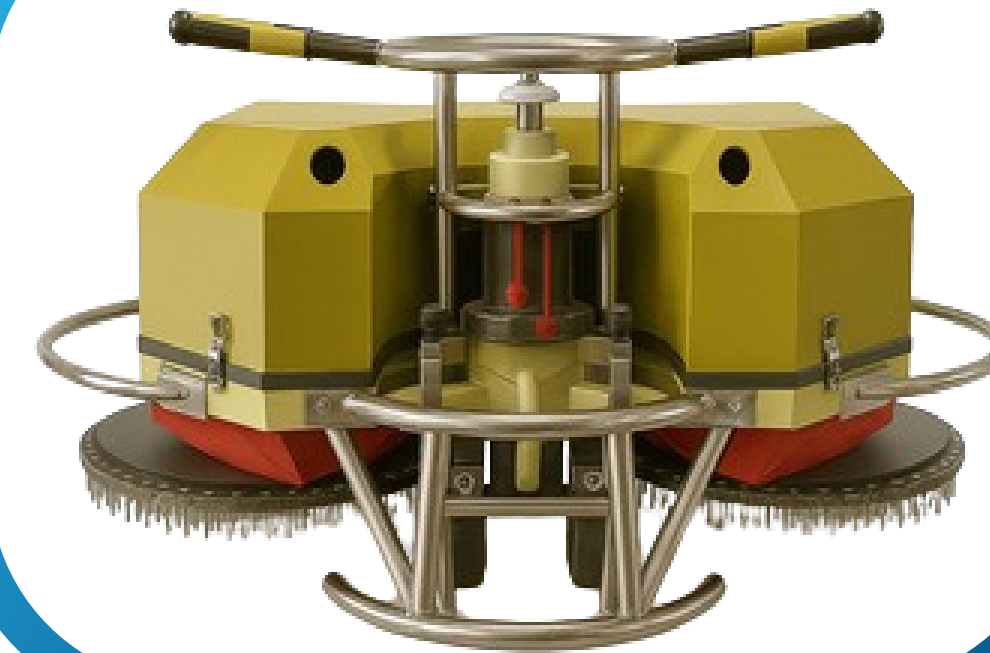
**Surface
Cleaning
Machines**



UHP Water Jet



**Cavit Cleaner
Hot Road**

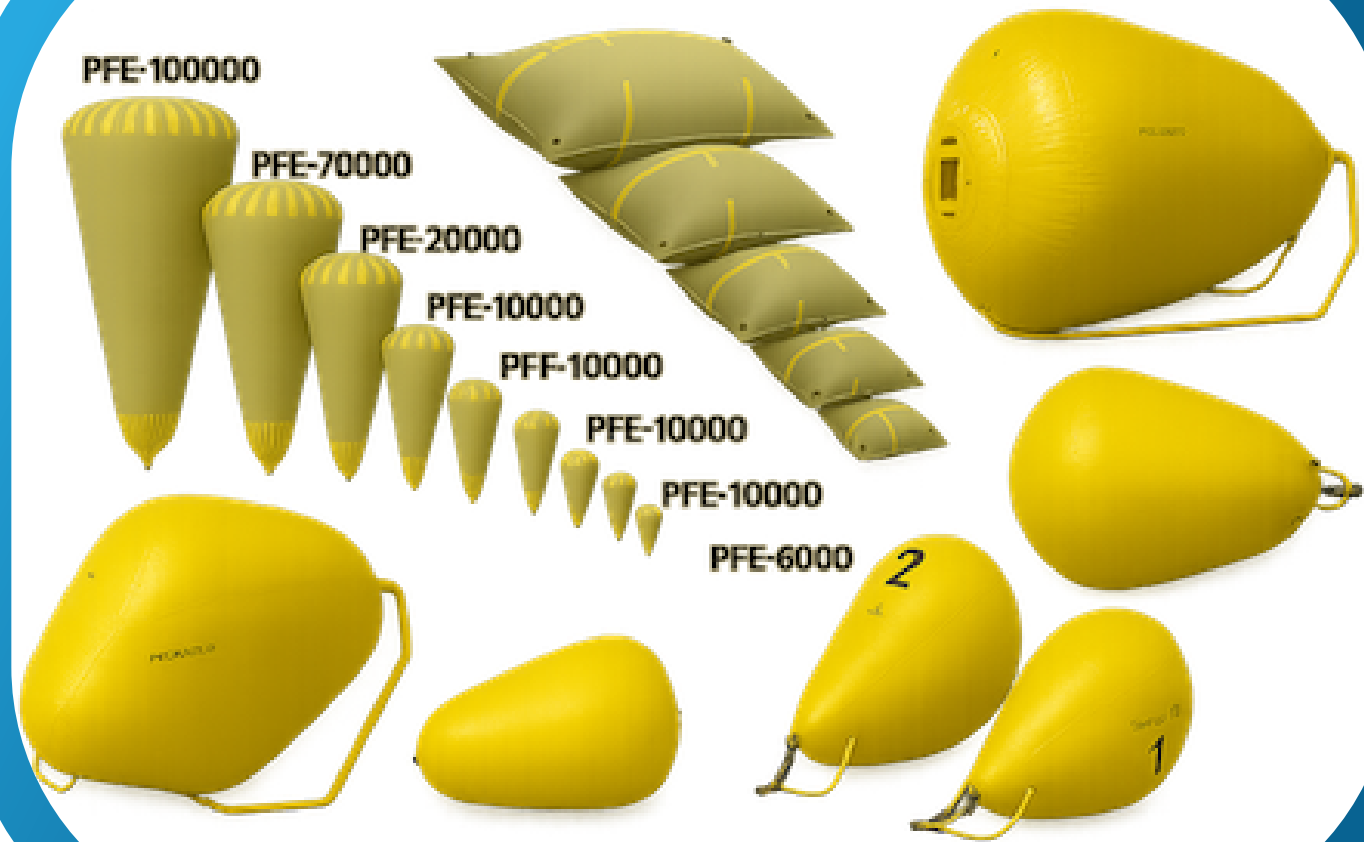


**Brush Cart - Hull
Cleaning Machine**

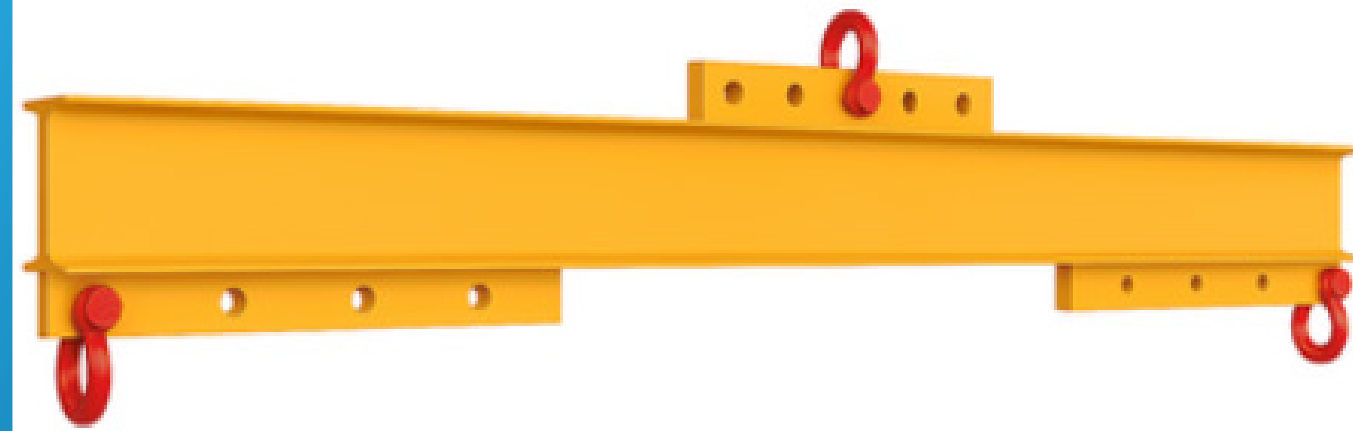


**Grit Blasting
Machine**

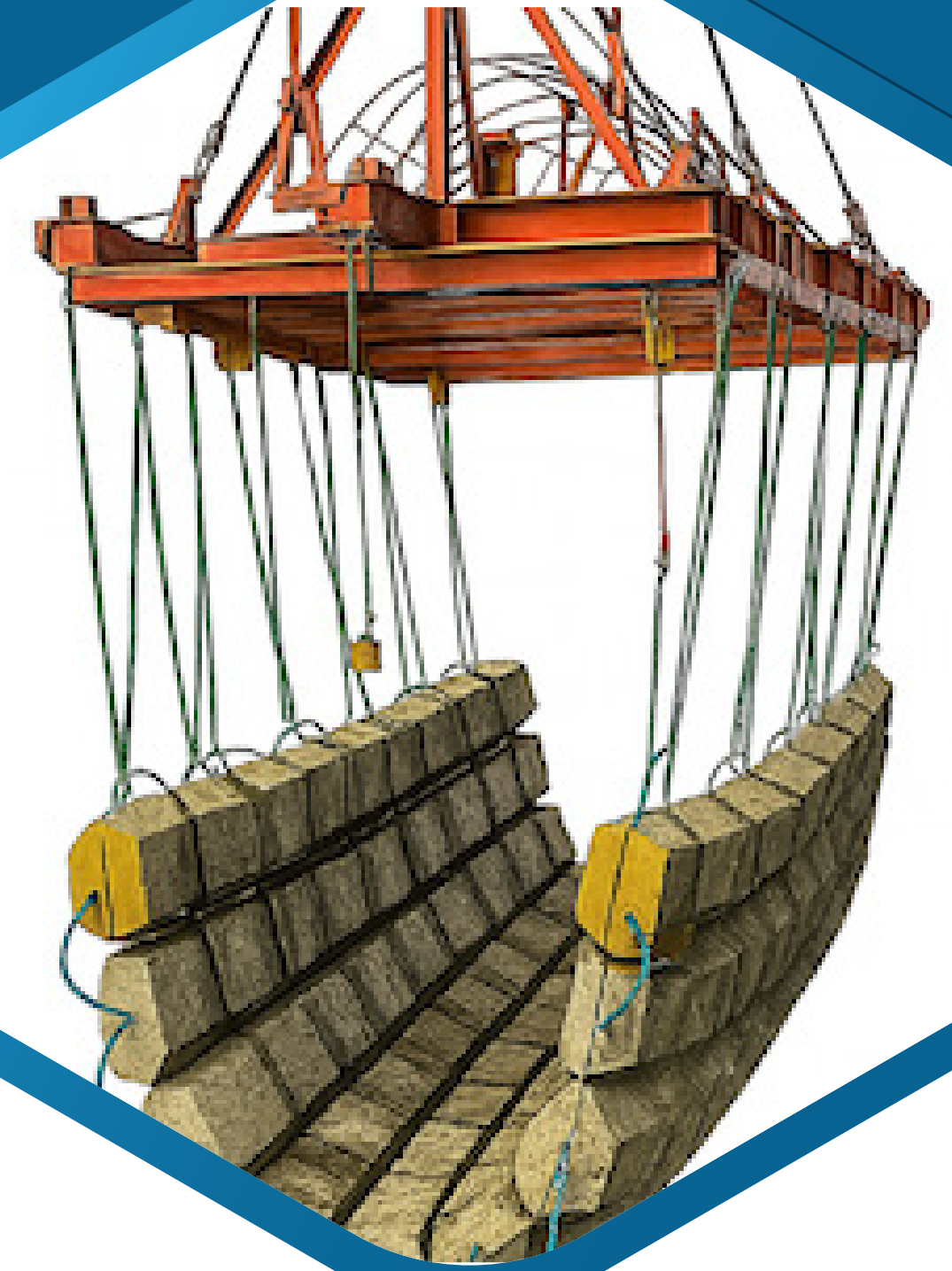
**Lifting Equipment & Rigging Gear
(Various Capacities)**



**Air bags Flotation Bags
(Enclosed Type &
Parachute Type)**



Spreader Beam



**Concrete Mattress
Lifting Frames
(ROVs or divers guide
placement on seabed.)**

**Underwater Hydraulic
and Pneumatic
Tools**



**Underwater Hydraulic
Peanut Grinder**



**Underwater Hydraulic
Jack Hammer BR87320**



**Underwater Hydraulic
Grinder GR29310**



**Underwater Hydraulic
Impact INT1650**



**Underwater Hydraulic
Cut-Off Saw**



**Underwater Hydraulic
Reciprocating Saw**

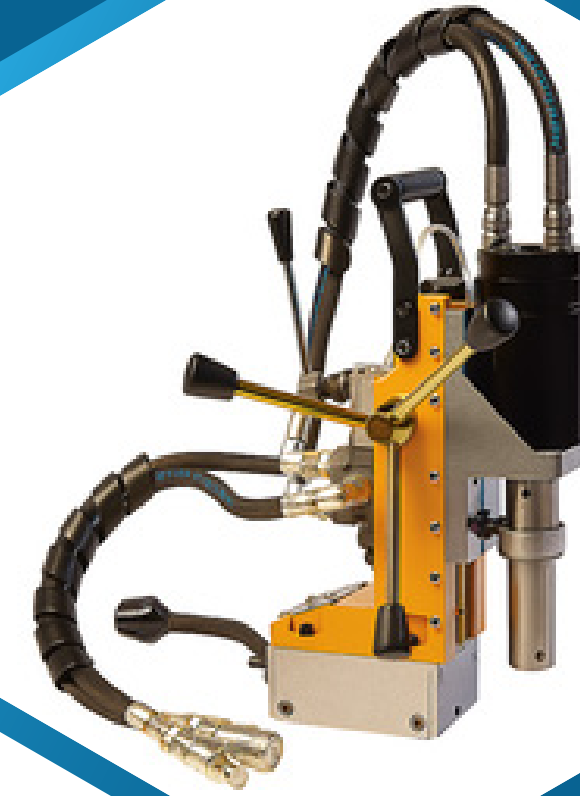
**Underwater Hydraulic
and Pneumatic
Tools**



Rock Splitter C 12



Hammer Drill HD45



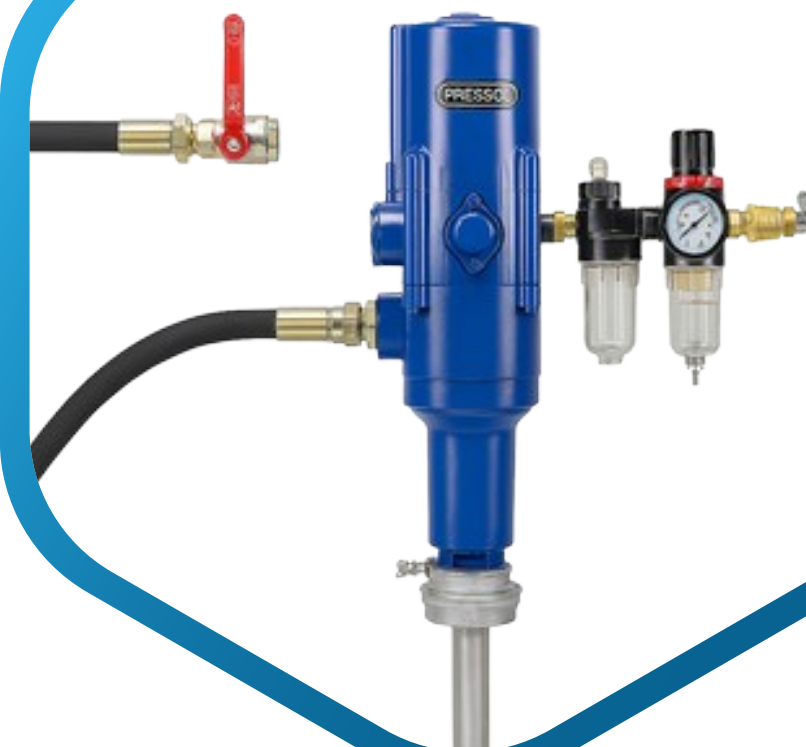
Hydraulic Magnetic Drill



Pneumatic Breaker

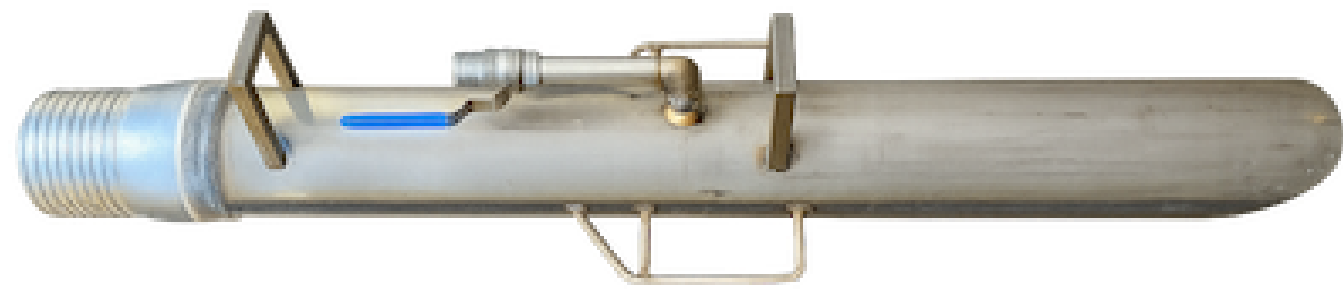


Beta Angle Die Grinder



Pneumatic Fuel Pump

Dredging Equipment



Air Lifting



Submersible Pumps

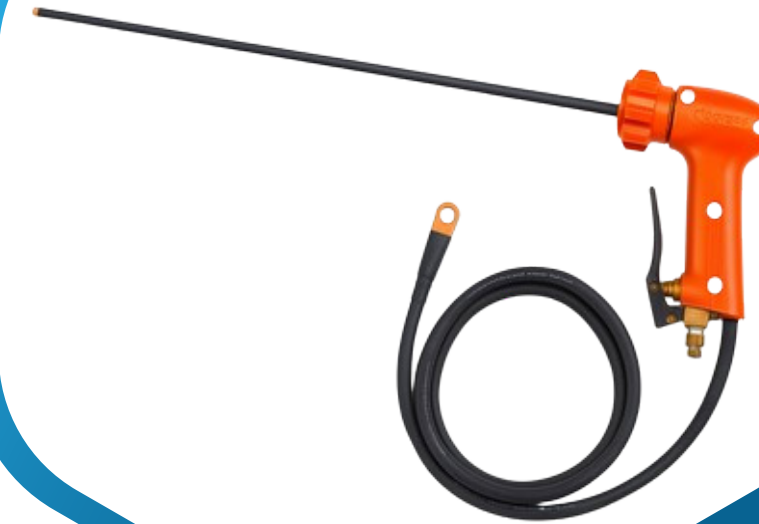
Welding & Cutting Equipment



**Diesel Miller
Welding Machine**



**Electric Miller
Welding Machine**



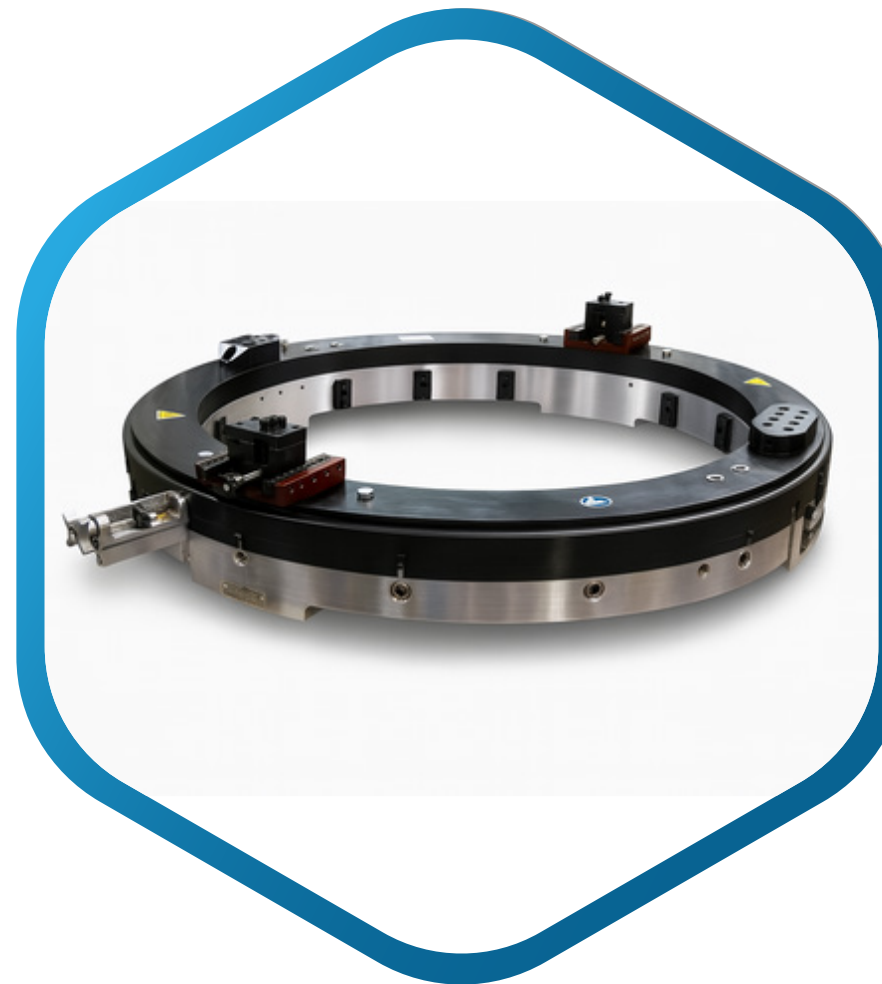
**Underwater
Cutting Torch**



**Underwater Welding
Stinger**

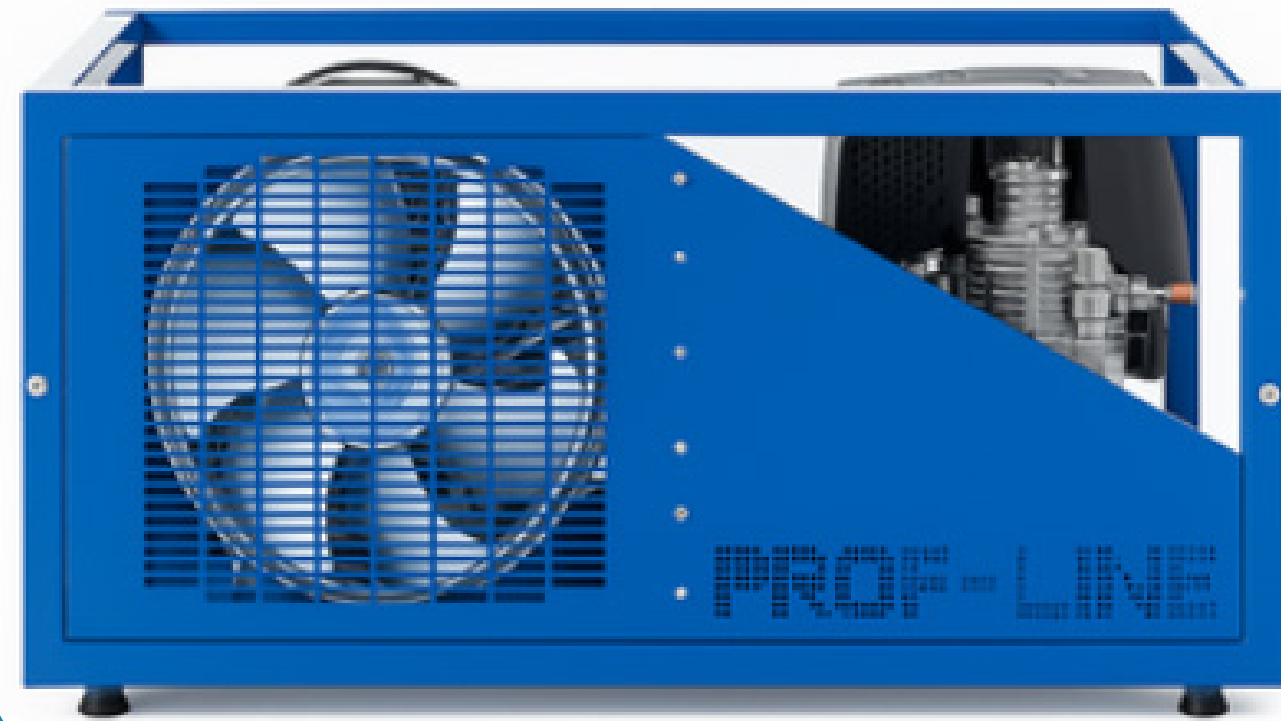


Diamond Wire Saw

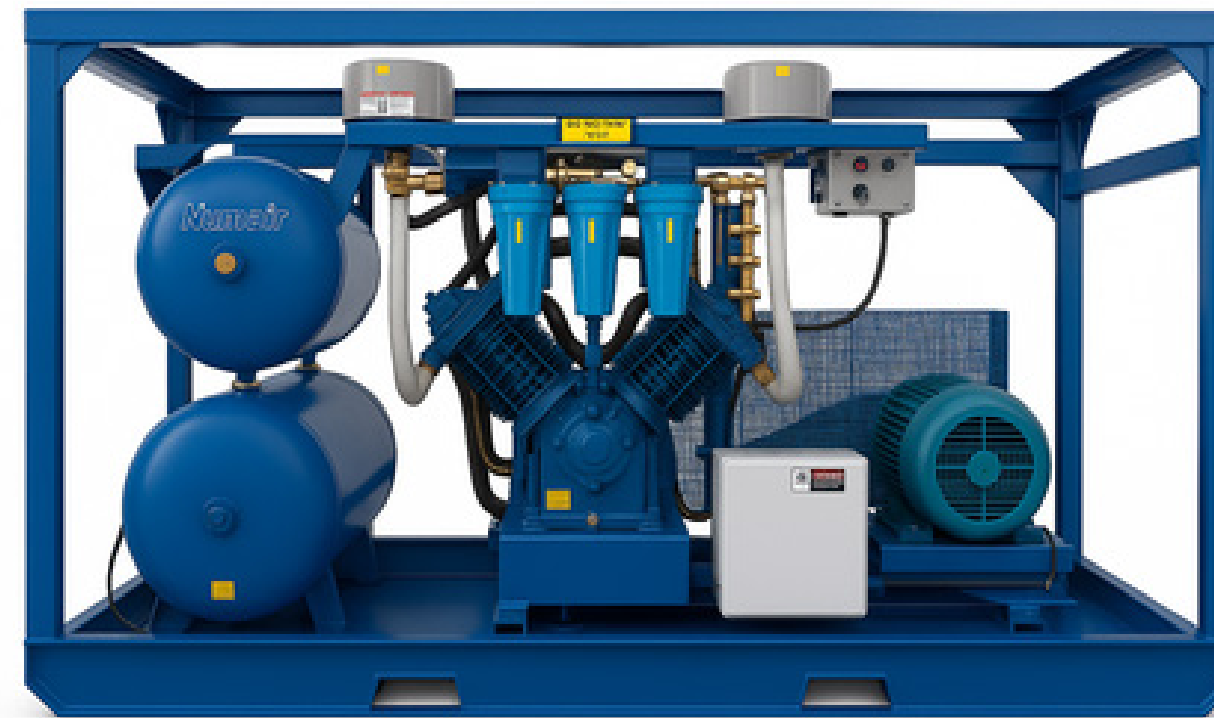


Cold Cutting Machine

**Compressors and
Generators**



**High Pressure
COMPRESSOR
(Breathing Air)**



**Low Pressure
COMPRESSOR
(Breathing Air)**



**Emergency
Generators**

**Construction & Heavy
Equipment**



**Containers & Porta
Cabins**



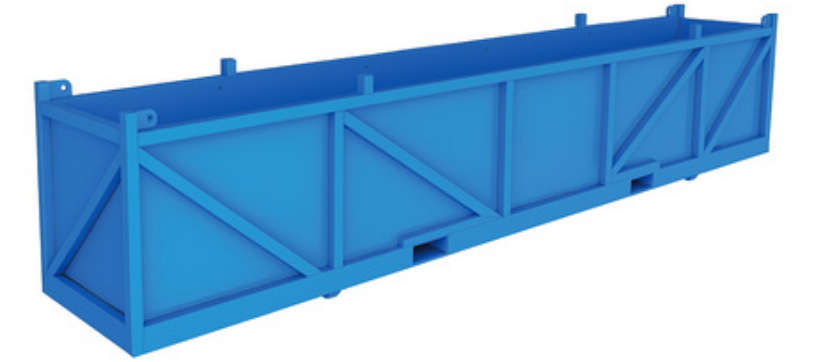
Tower Lights



Grouting Pump



Forklift



**Half Height Offshore
Cargo Baskets**



Crawler Crane



Flat Bed Trailer



Excavator

Outboard Motors



**Outboard Motor
Dtorque**



**Outboard Motor
Yanmar D27**

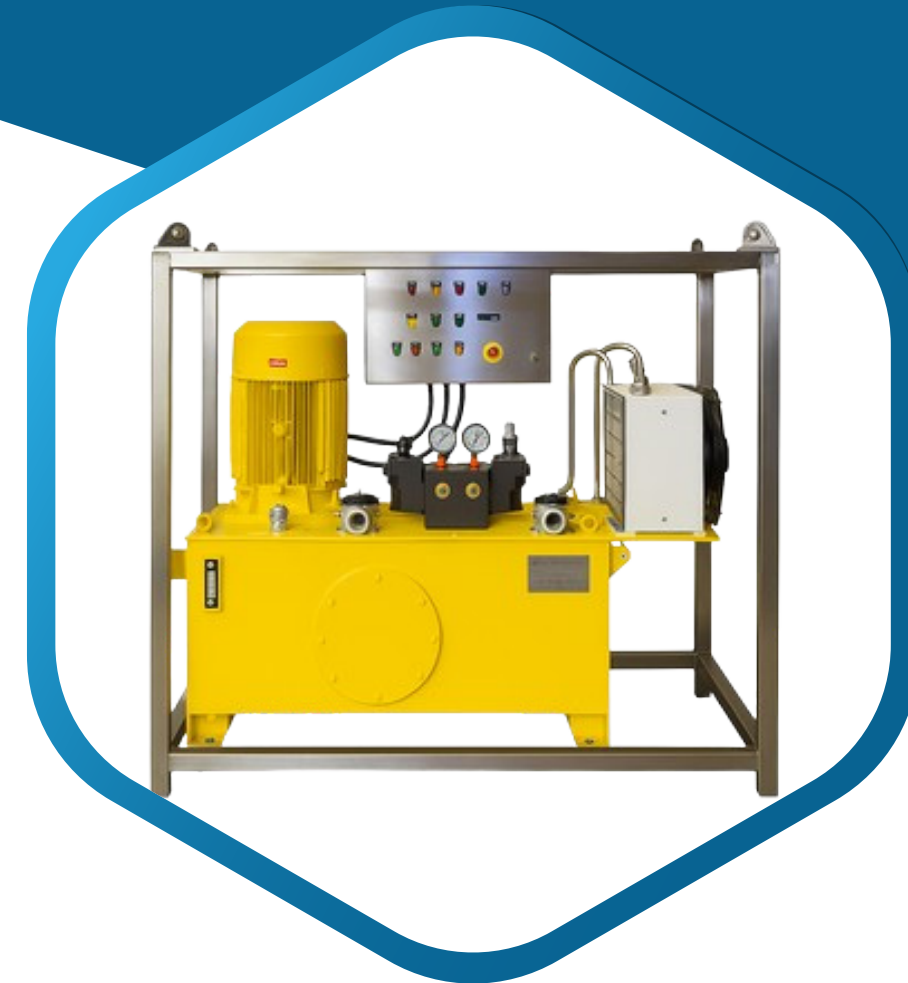


**Outboard Motor
Yanmar D36**



**Outboard Motor
Yanmar D40**

**Hydraulic
Equipment**



Electric Powerpack



**Diesel
Powerpack**



Hydraulic Hose Reel



Hydraulic Torque Wrenches



Hydraulic Bolt Tensioner

Industrial & Medical Gases



Nitrogen Cylinders



**Industrial Oxygen
Cylinders**



Medical Oxygen Cylinders



HP Air Cylinders



Oxy-Acetylene Cylinders

**Personal Diving
Gears & Accessories**



Kirby Morgan Helmets



**MKS R-Vest with
Hard Backpack**



**Underwater Diving
Umbilical (4 elements)**

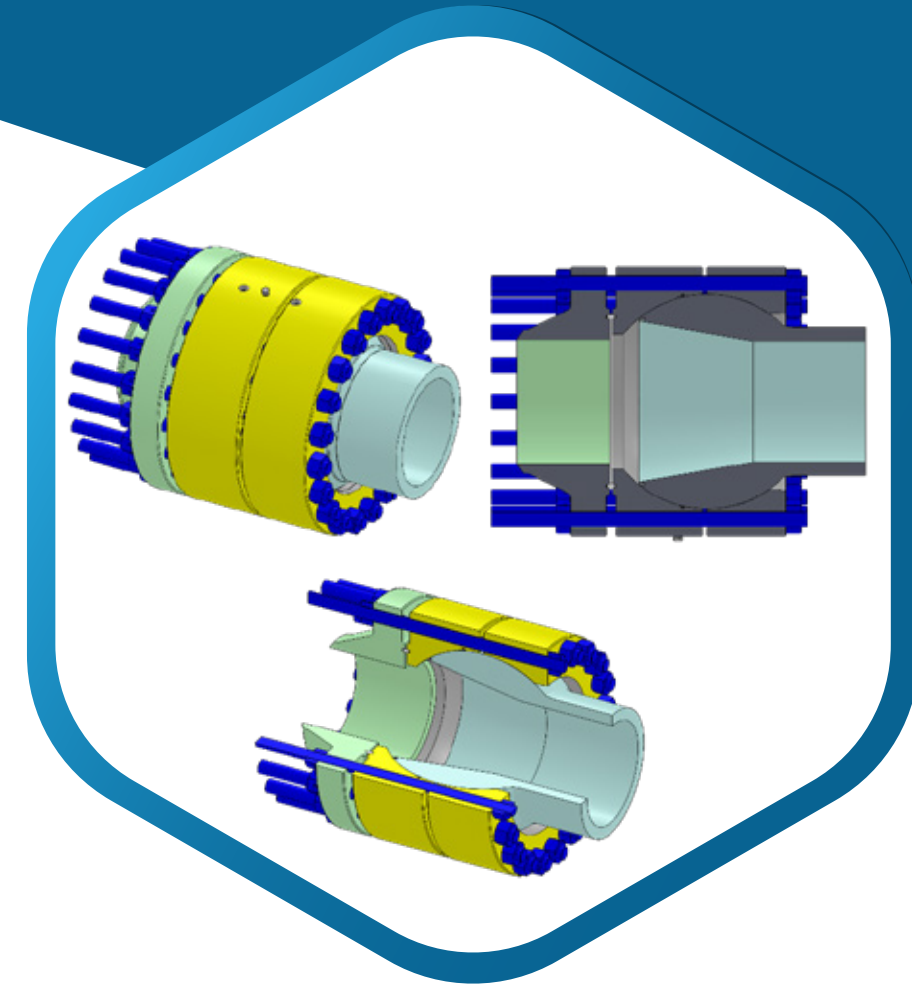


Bailout Cylinders



Underwater Camera Outland

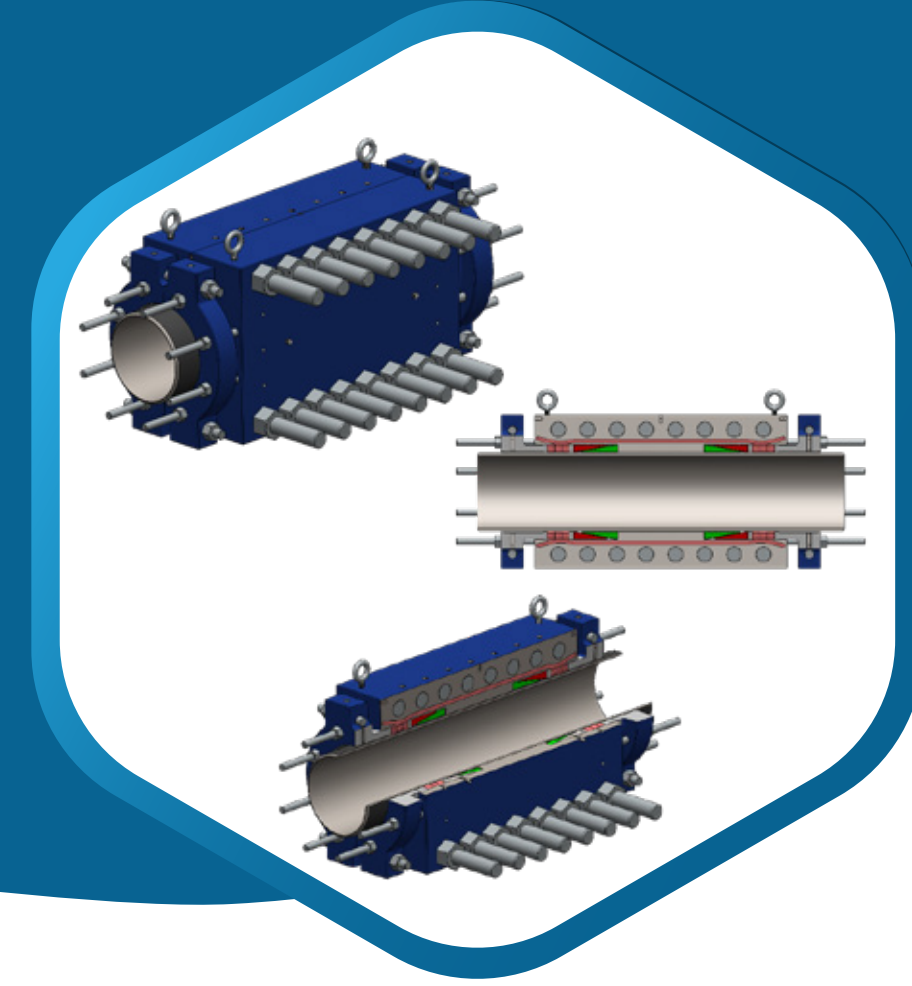
Innovative Engineering Solutions



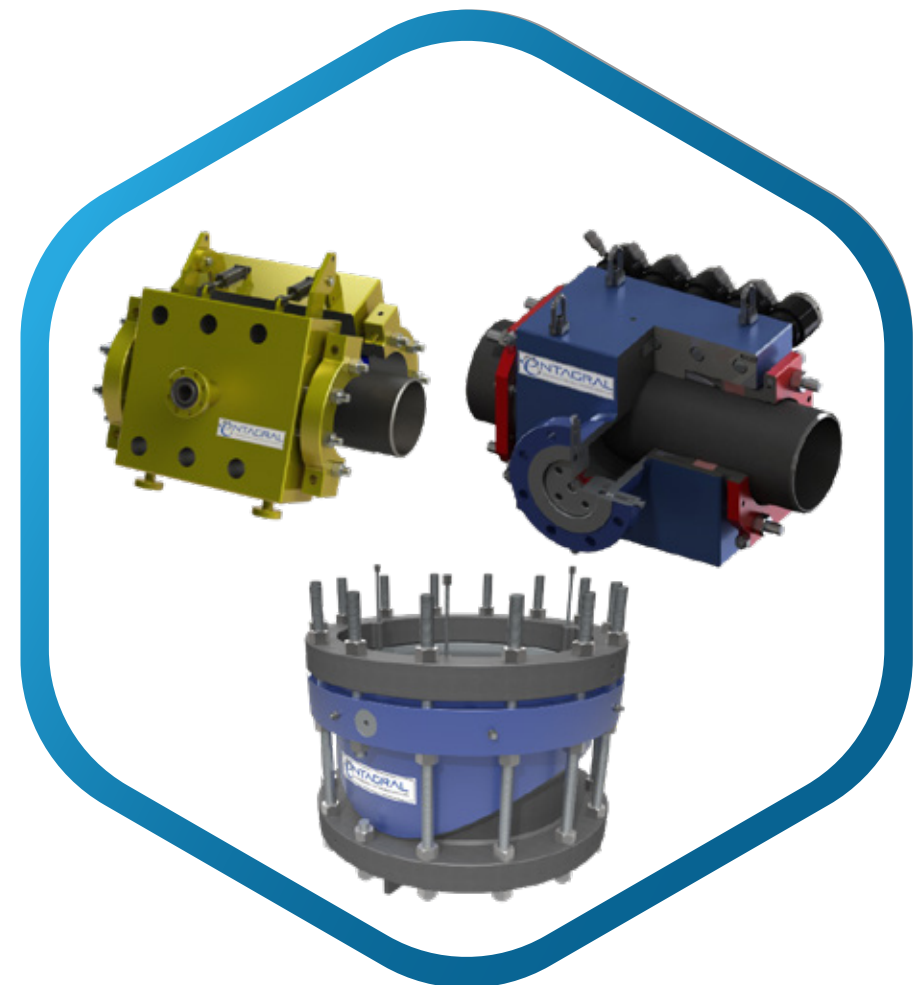
Misalignment Flanges



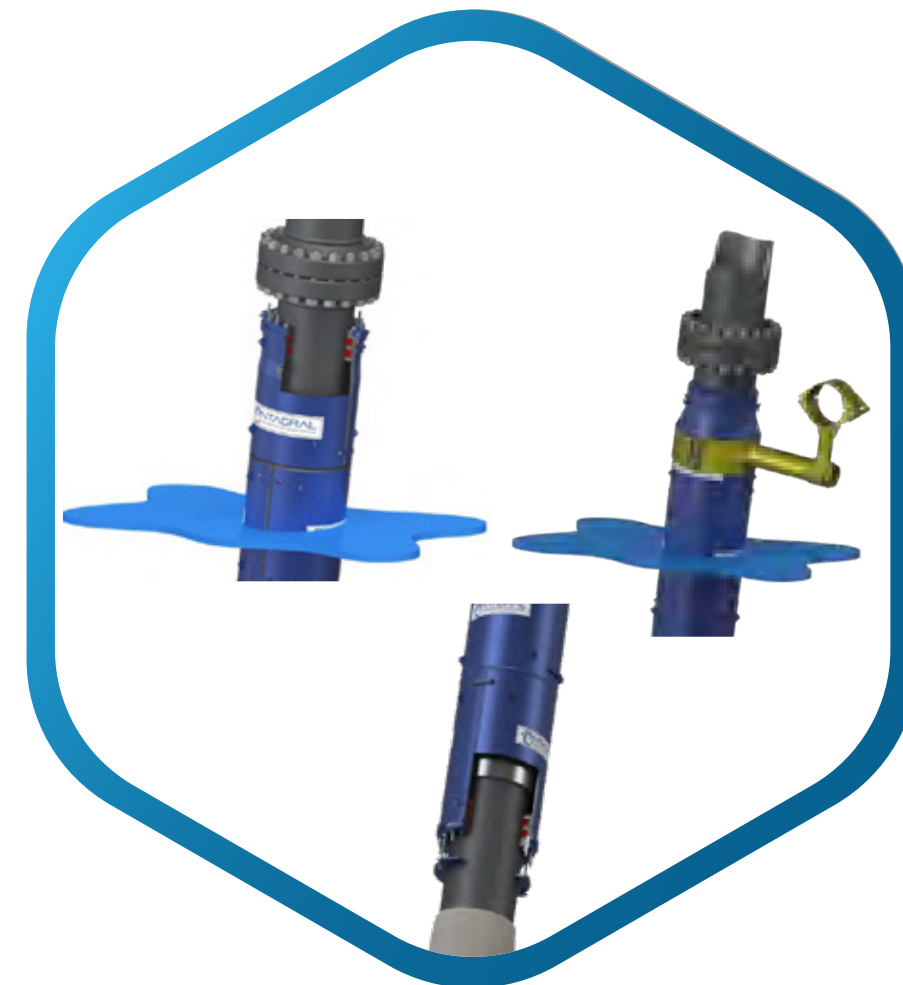
Mechanical Connectors



Repair Clamps



Hot Tap Clamps



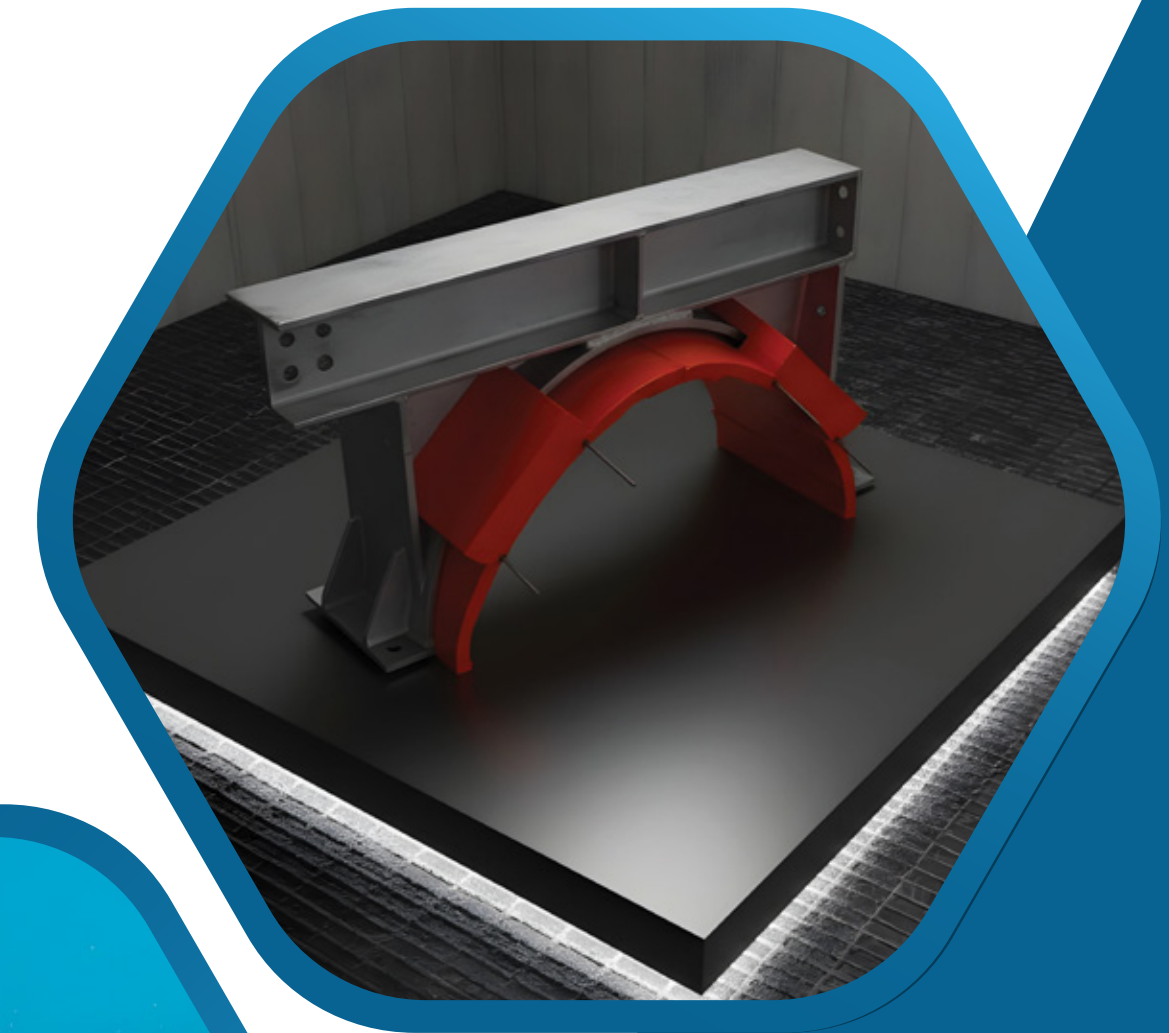
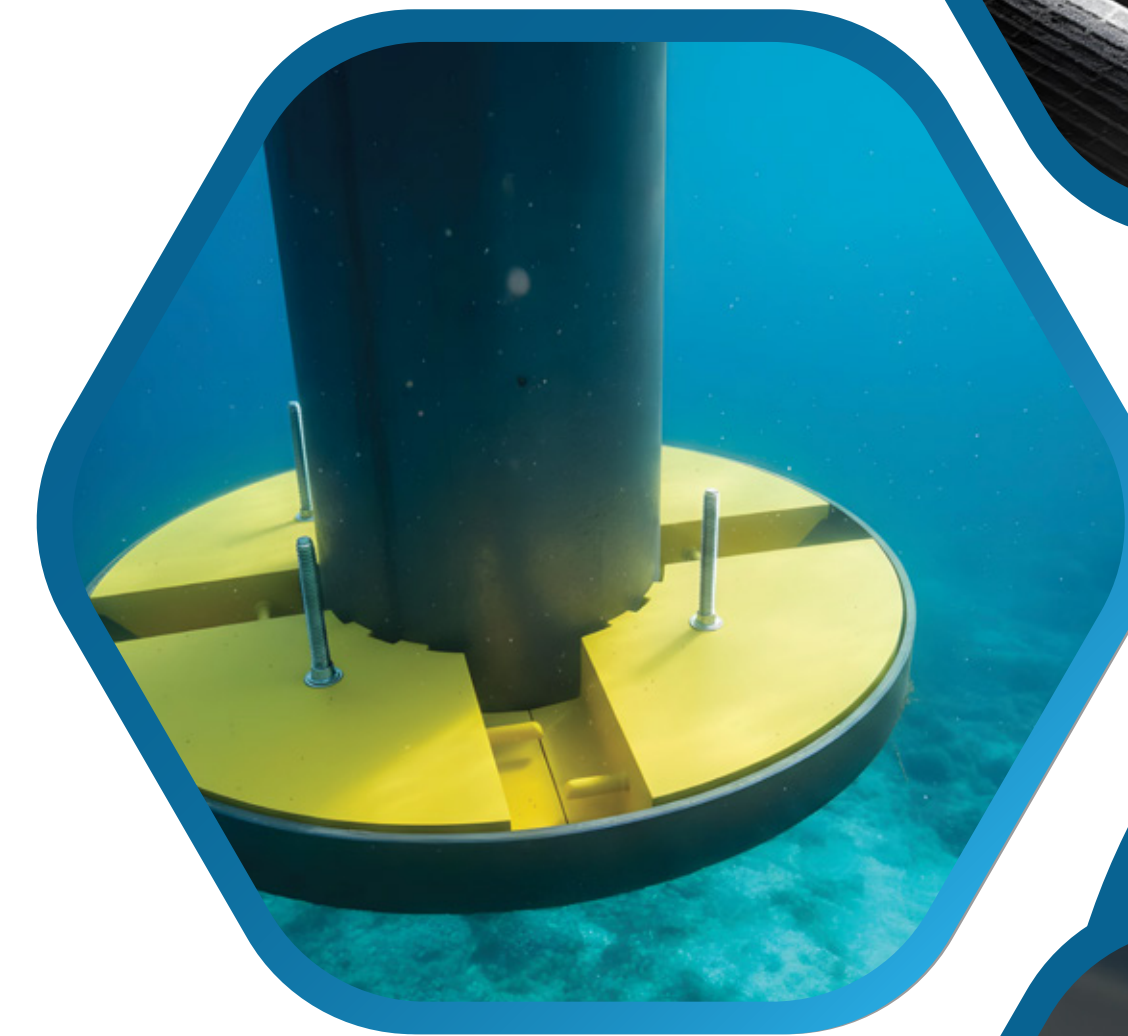
Riser Repair Sleeves

A high-angle, close-up photograph of an offshore oil or gas wellhead. The image shows a complex network of thick, grey metal pipes and brown, rusted steel structural beams. Several large, orange-colored centralisers are visible, which are used to guide and support the conductor pipes. The background shows the deep blue ocean with white foam from the waves. The text 'Offshore Conductor Centralisers' is overlaid in white on the left side of the image.

Offshore Conductor
Centralisers

Dorsal Conductor Centraliser

The Dorsal Centraliser is engineered to protect offshore conductors from vibration, coating degradation, and long-term fatigue caused by waves and currents. Its elastomeric design absorbs external forces, eliminates point loads, and reduces dynamic stresses on the conductor and guide frame. With rapid offshore installation, customizable configurations, and life-of-field reliability, Dorsal enhances asset integrity, extends service life, and provides a cost-effective solution for safer, more efficient operations.

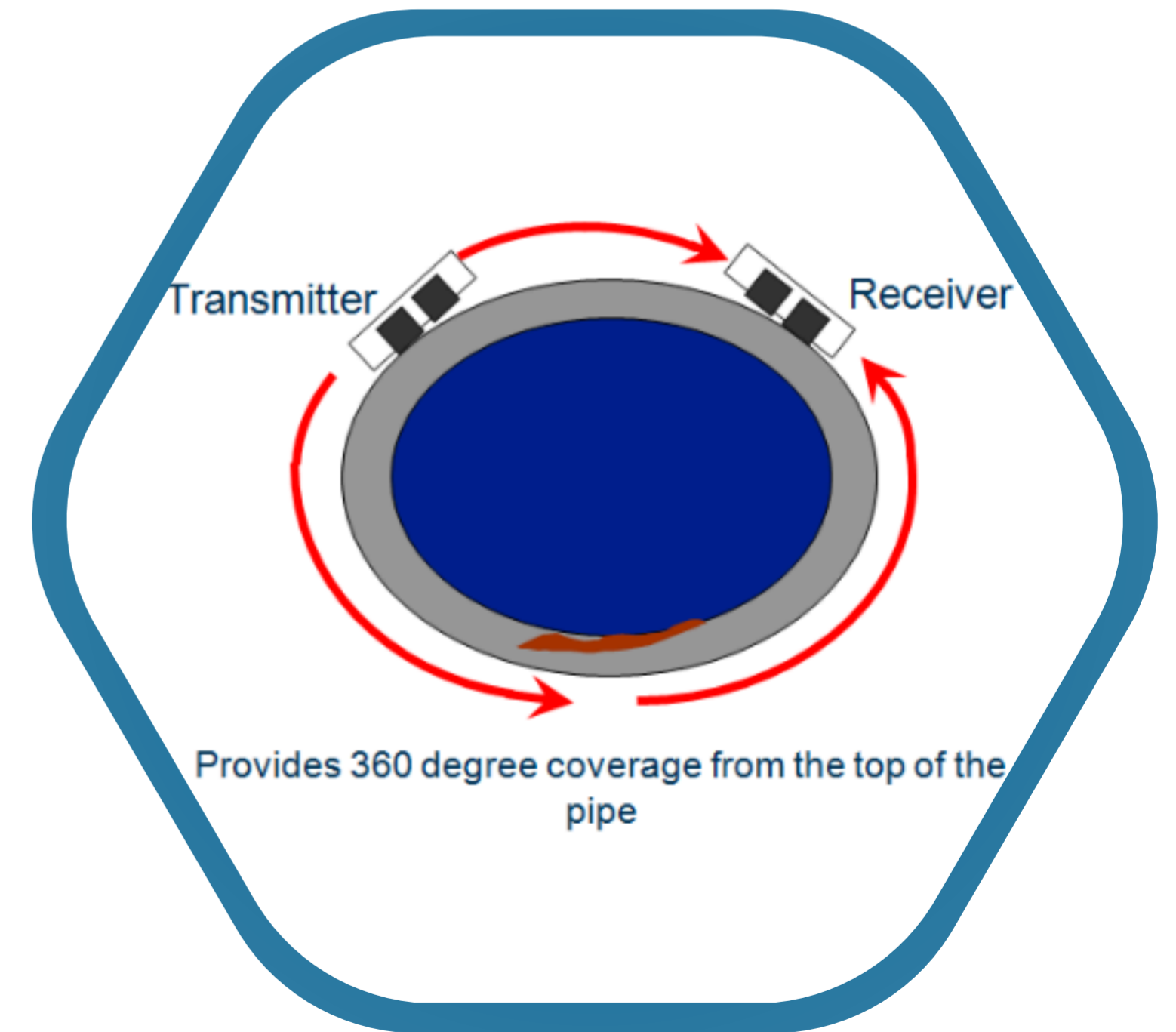
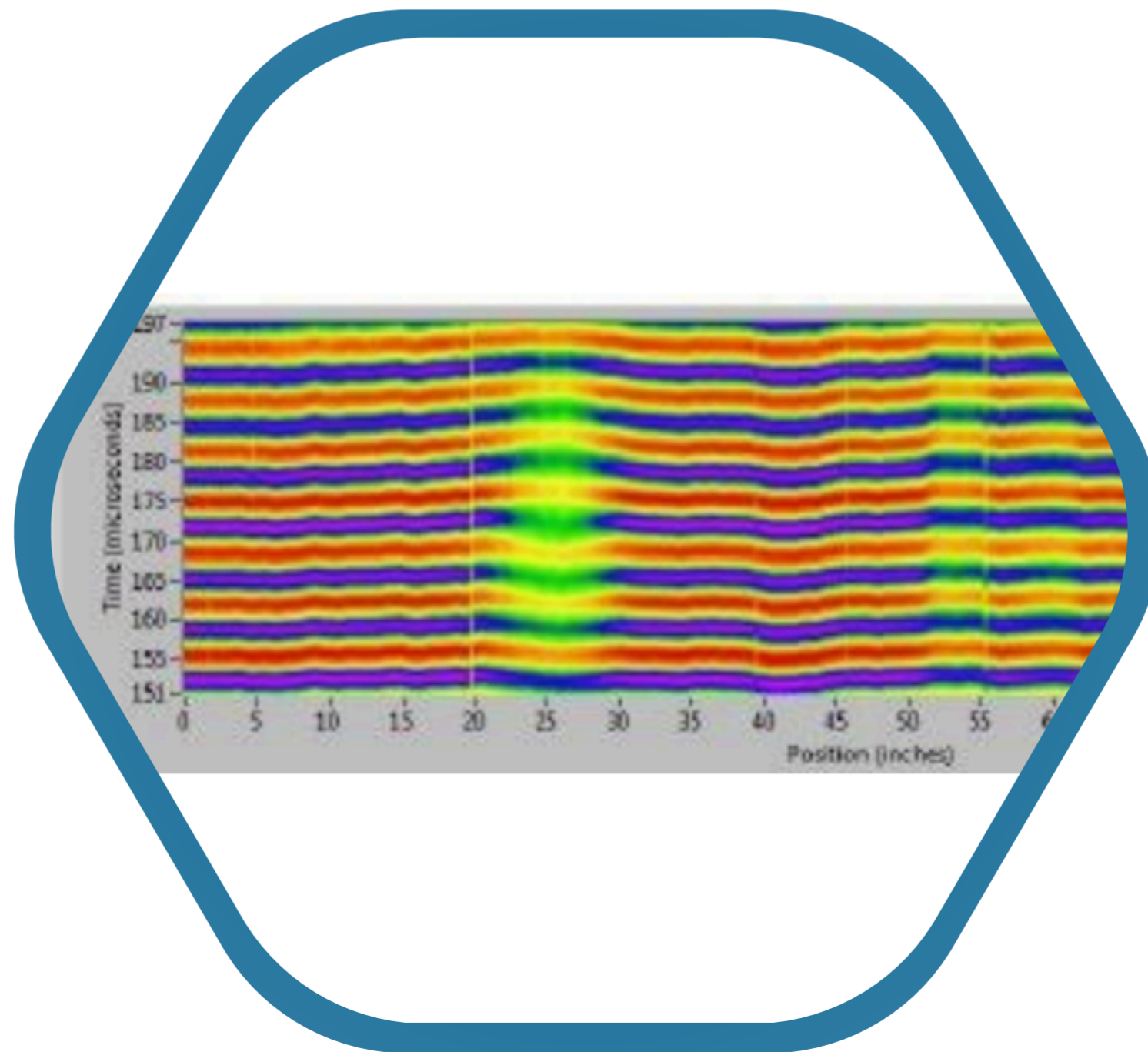
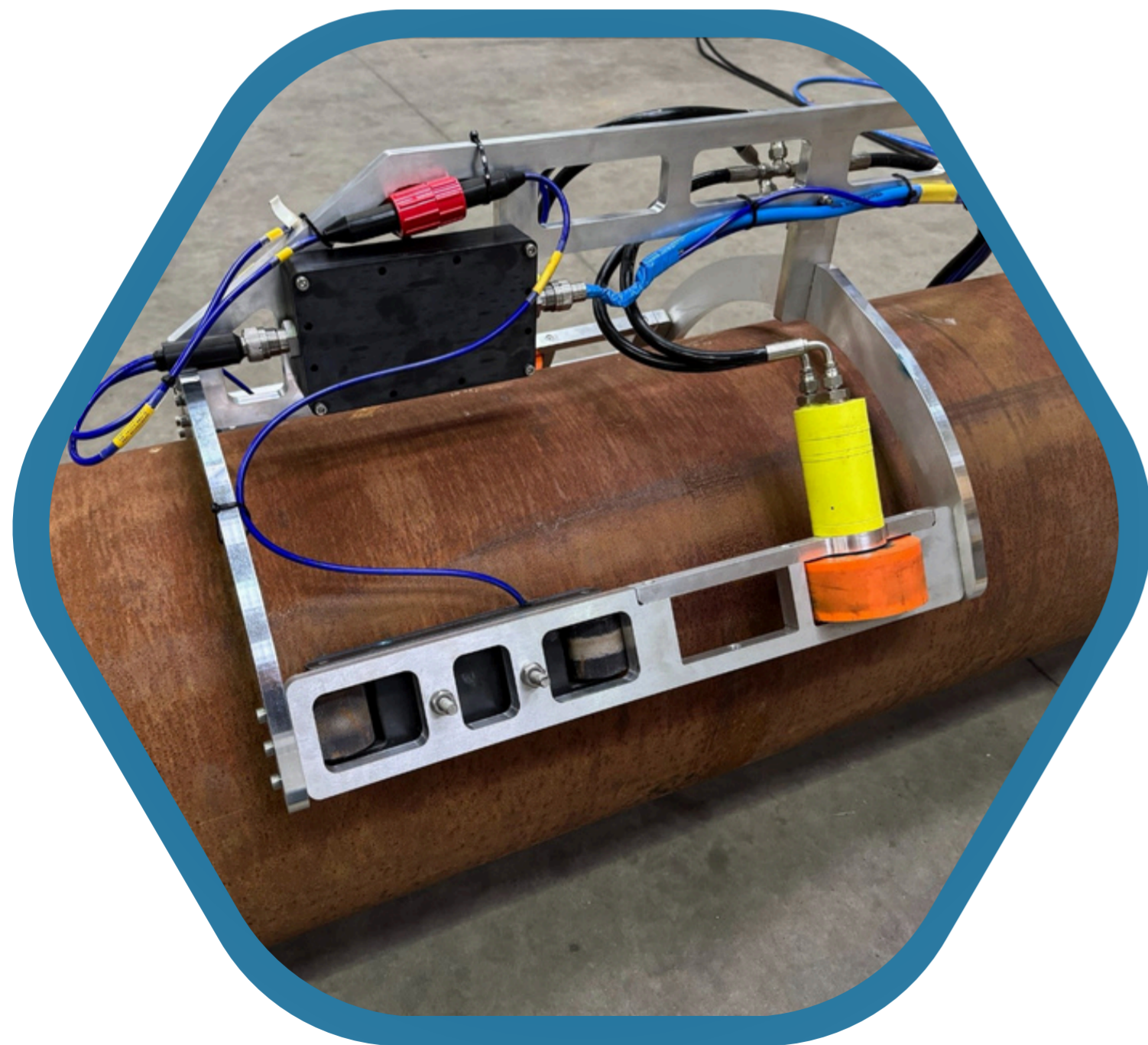




Advanced
NDT Solutions

Electro Magnetic Acoustic Transducer (EMAT)

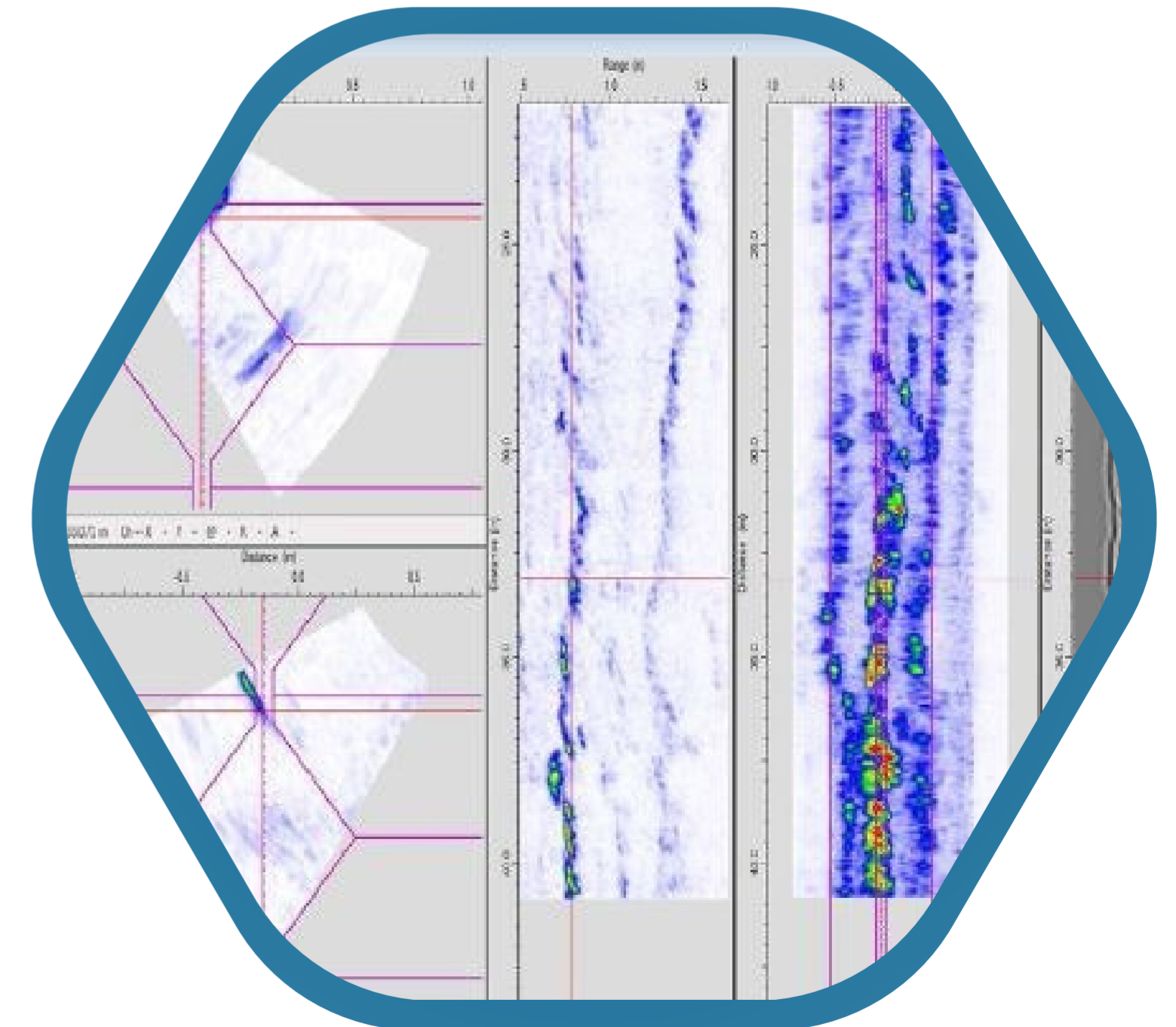
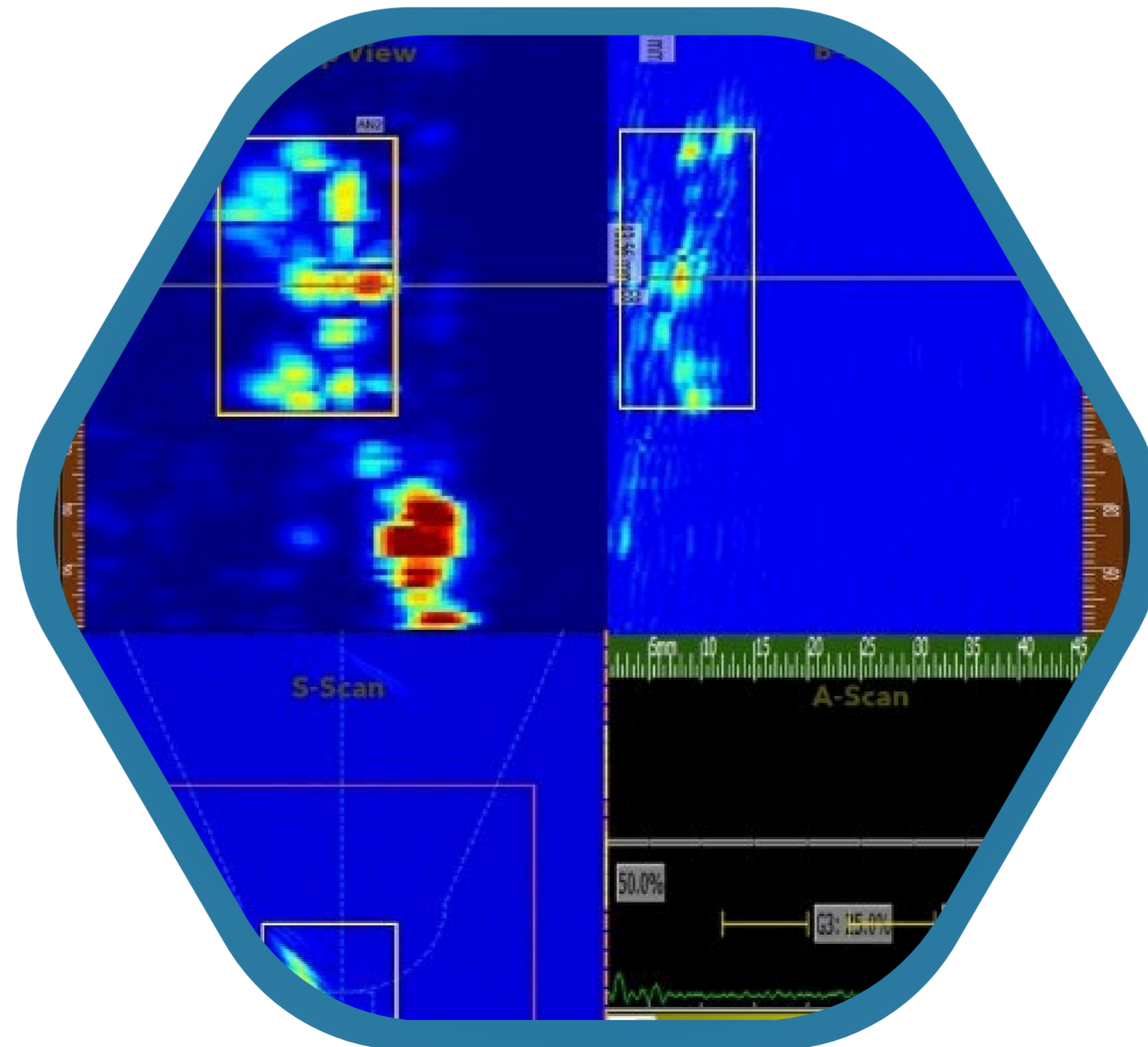
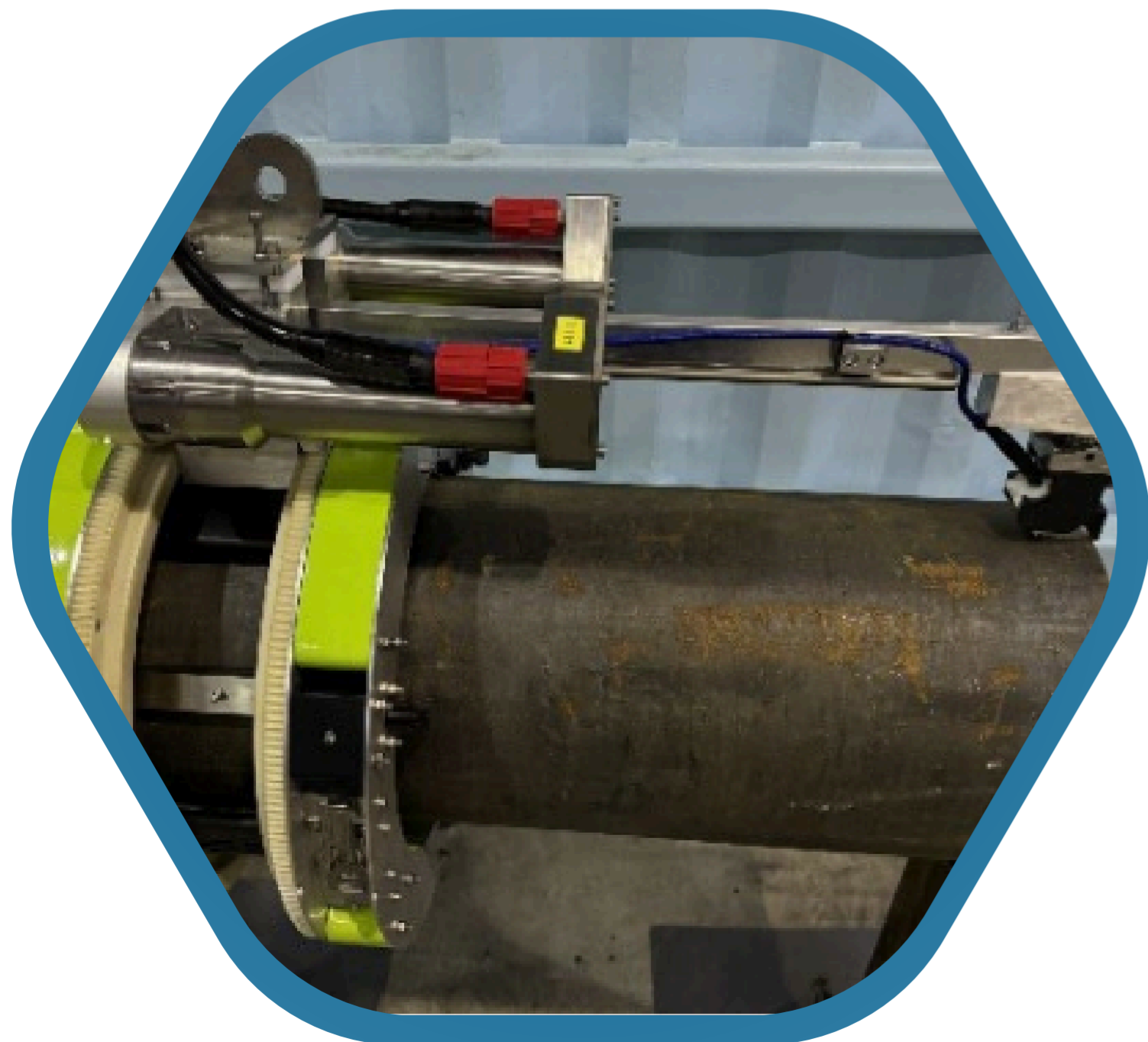
EMAT is an Ultrasonic Testing (UT) technique that generates sound in the part to be inspected instead of, as with conventional UT, the transducer. EMAT does not require direct contact with the inspection surface which makes it suited for inspection where coatings are present.



SUBSEA NDT Solutions

Phased Array Ultrasonic Testing (PAUT) & Time of Flight Diffraction (ToFD)

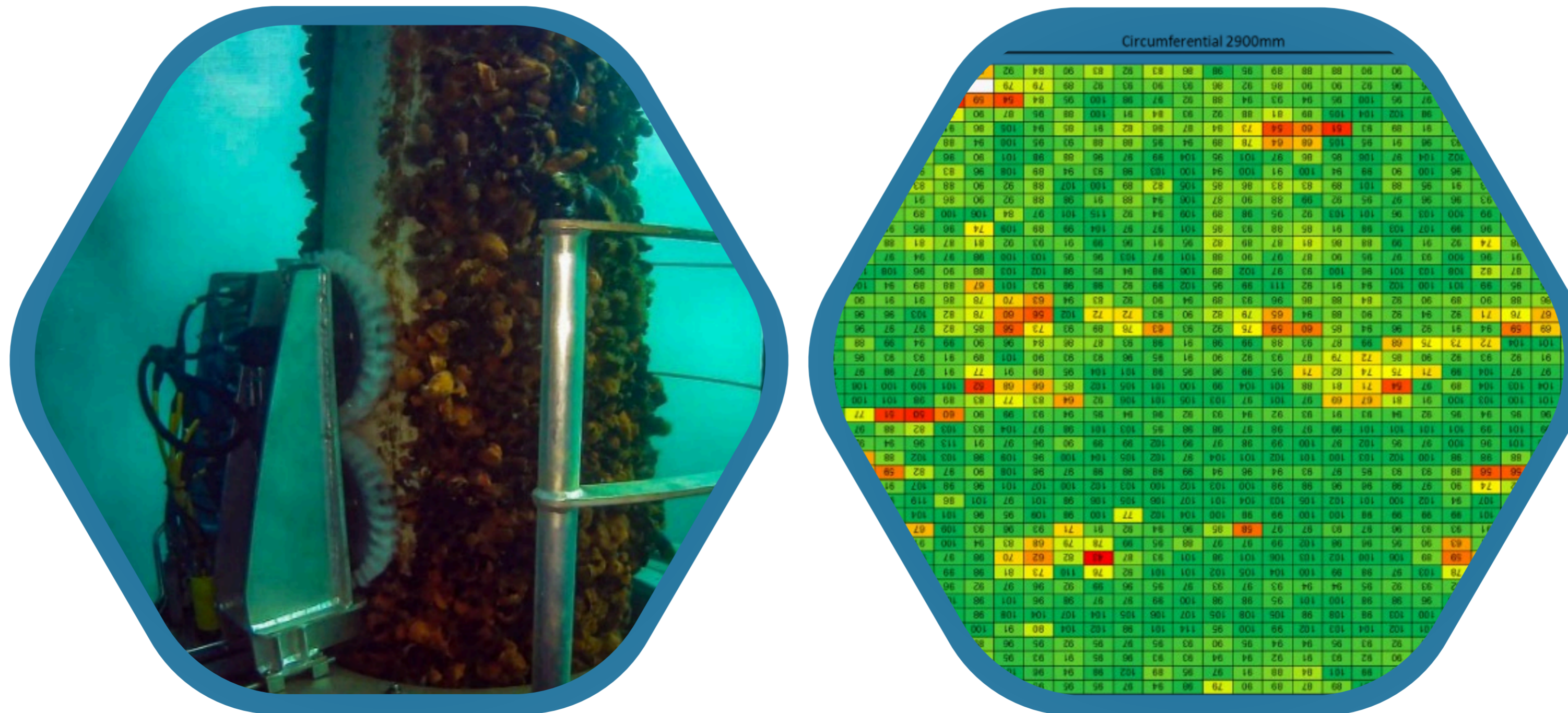
PAUT and ToFD provide a complementary subsea inspection solution. Together, they deliver fast, accurate weld assessment and reliable corrosion mapping, ensuring superior defect detection and sizing in challenging offshore environments.



SUBSEA NDT Solutions

Pulsed Eddy Current Array (PECA)

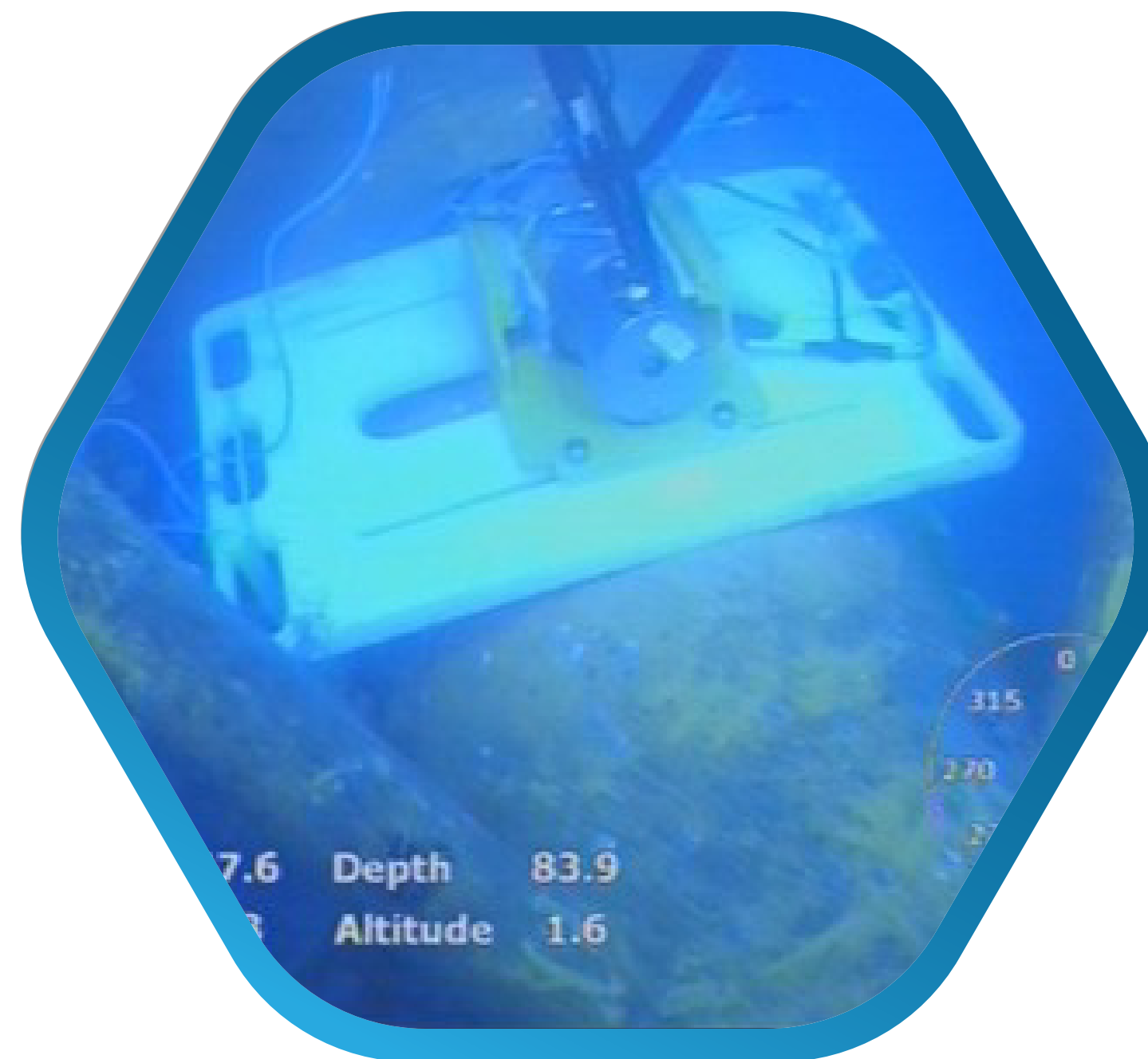
PECA is an electromagnetic technique used to measure wall thickness in conductive materials. It enables the detection of general wall loss and erosion, inspection of insulated and weight-coated pipelines, integrity checks on neoprene-clad risers and caissons, as well as reliable splash zone and subsea inspections.



SUBSEA NDT Solutions

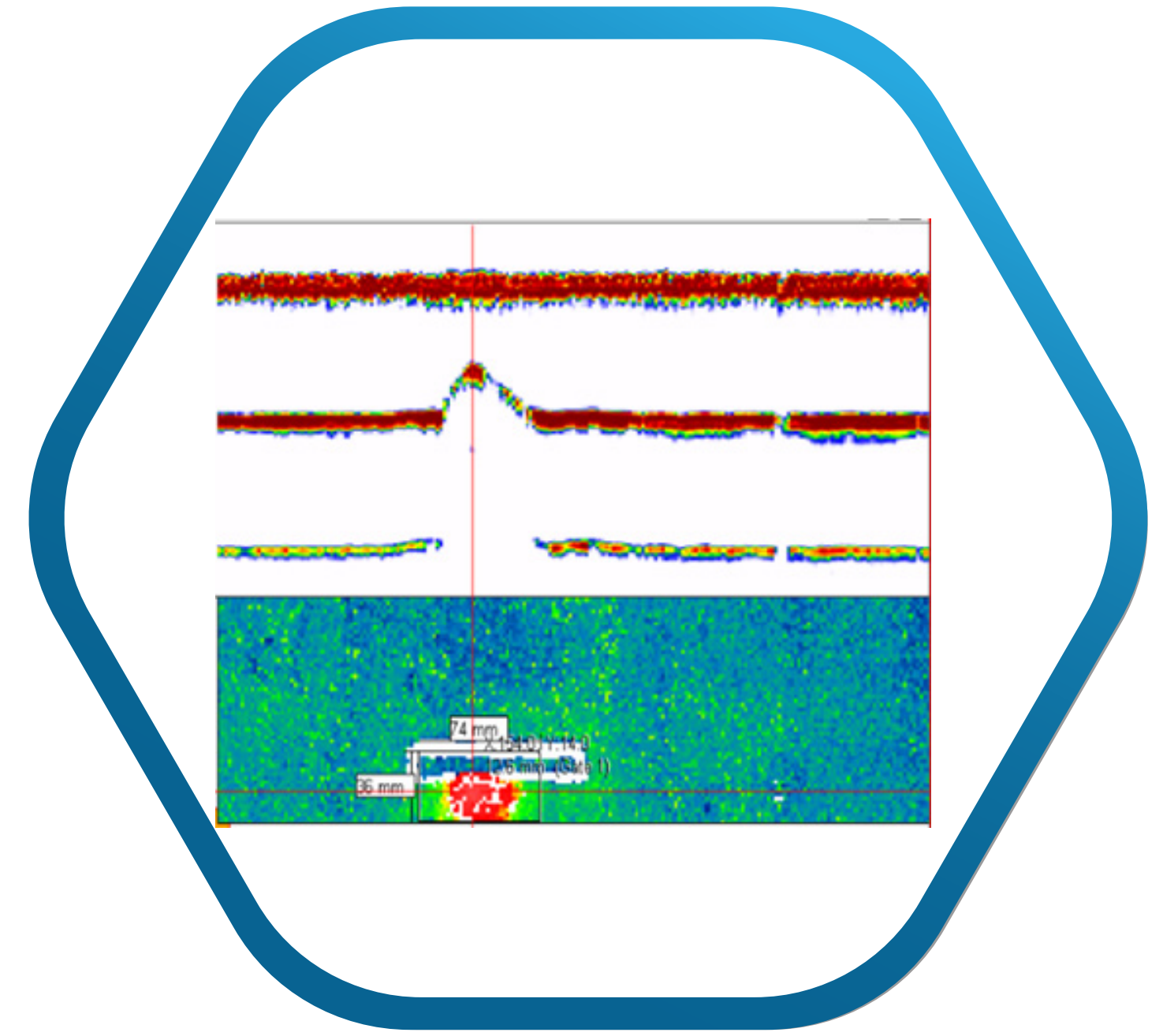
Digital Radiography (DR)

DR delivers high-resolution imaging of subsea pipelines and structures without the need for coating removal. Utilizing a marinized Iridium-192 source and Digital Detector Array (DDA), it enables the detection of wall loss, erosion, pitting, and blockages. This technique is suitable for coated assets, and is highly effective in both splash zone and subsea environments, making it ideal for inspecting non-piggable or non-scrapable pipelines.



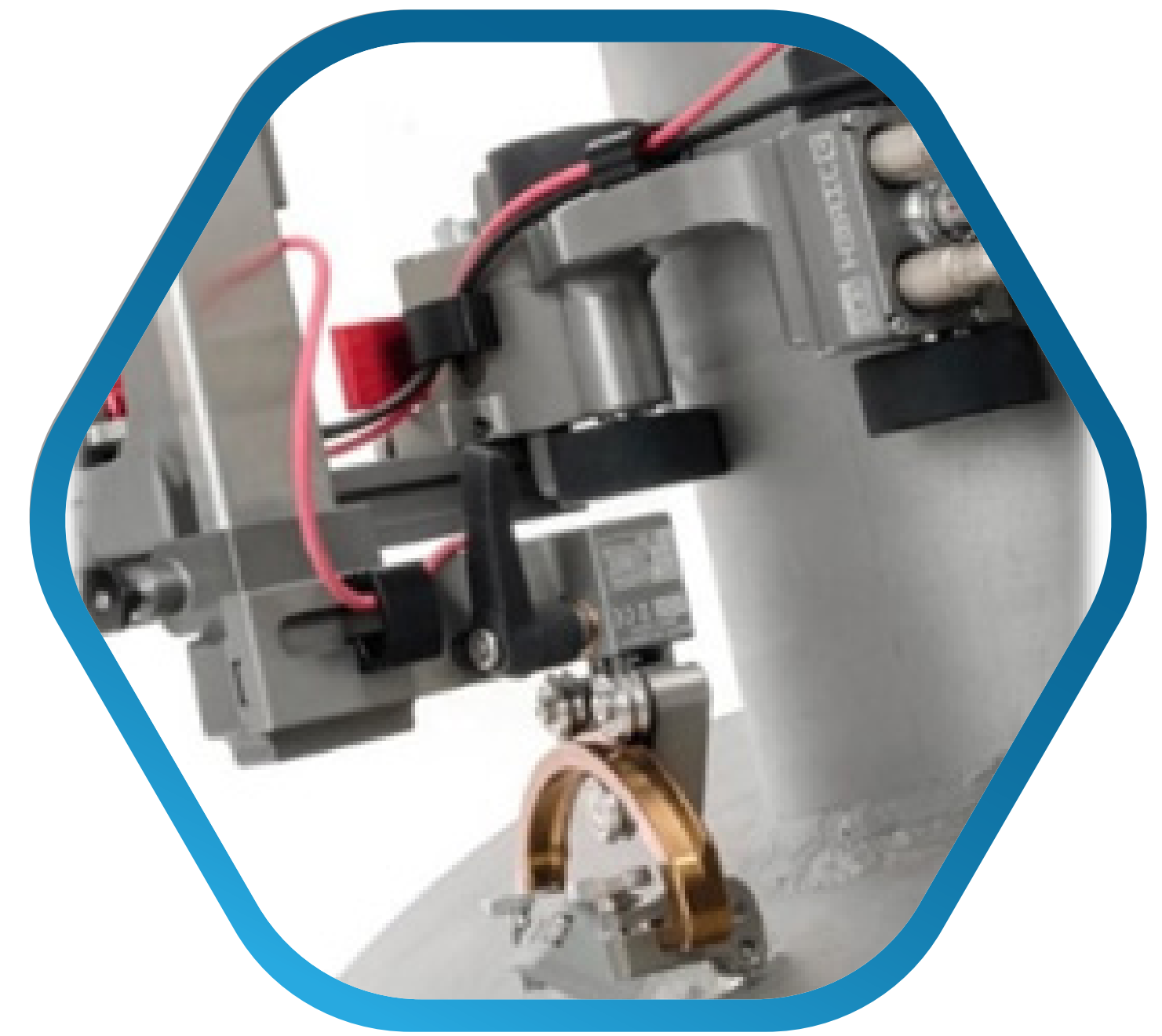
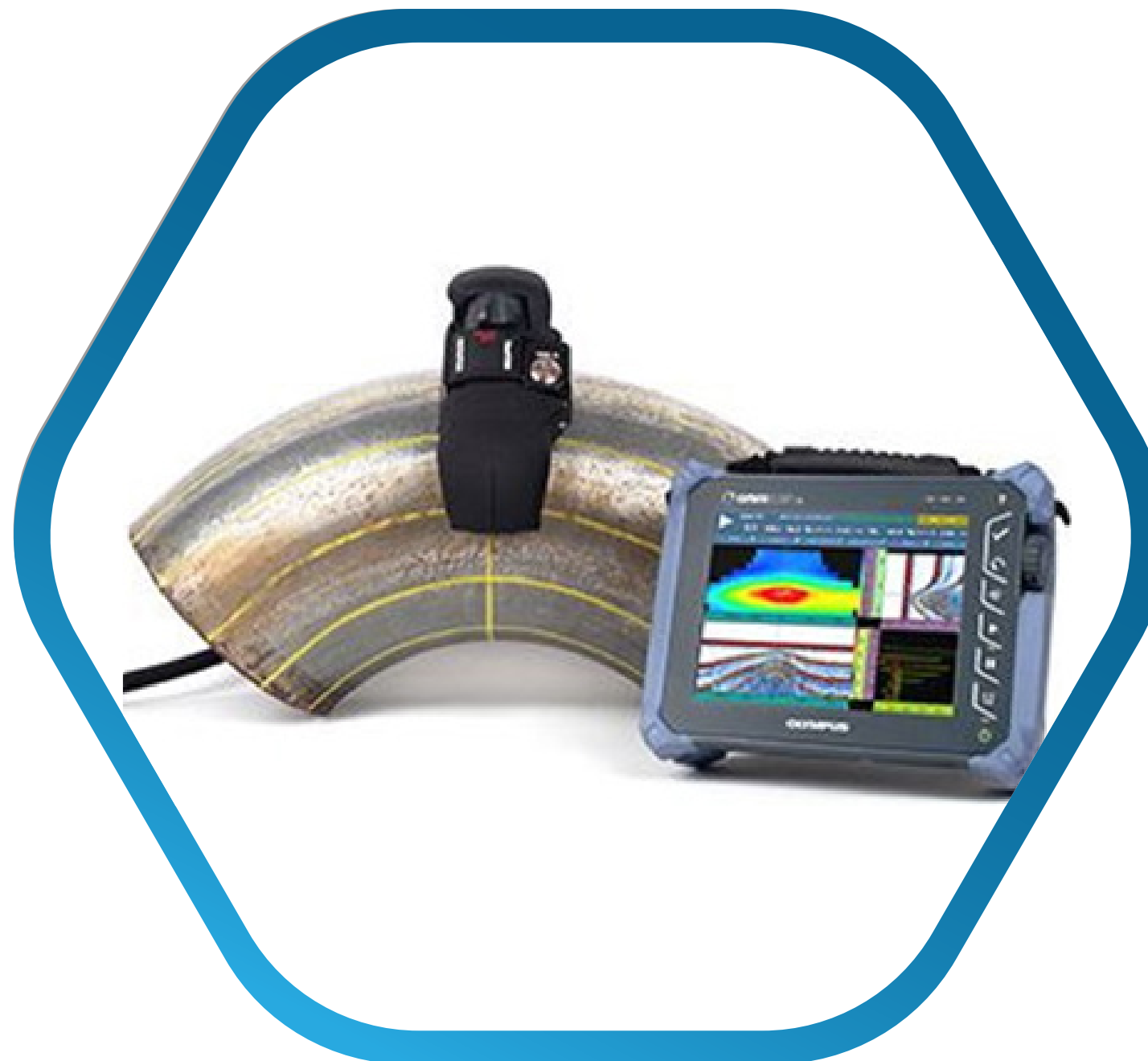
Automated Ultrasonic Testing (AUT)

AUT is an advanced non-destructive testing (NDT) technique that uses a mechanized portable scanner with ultrasonic probes and a sophisticated data acquisition system. Recognized as the most accurate method for detecting and sizing weld flaws, AUT is ideal for high-production environments, including storage tanks, pressure vessels, pipelines, and other critical welded structures.



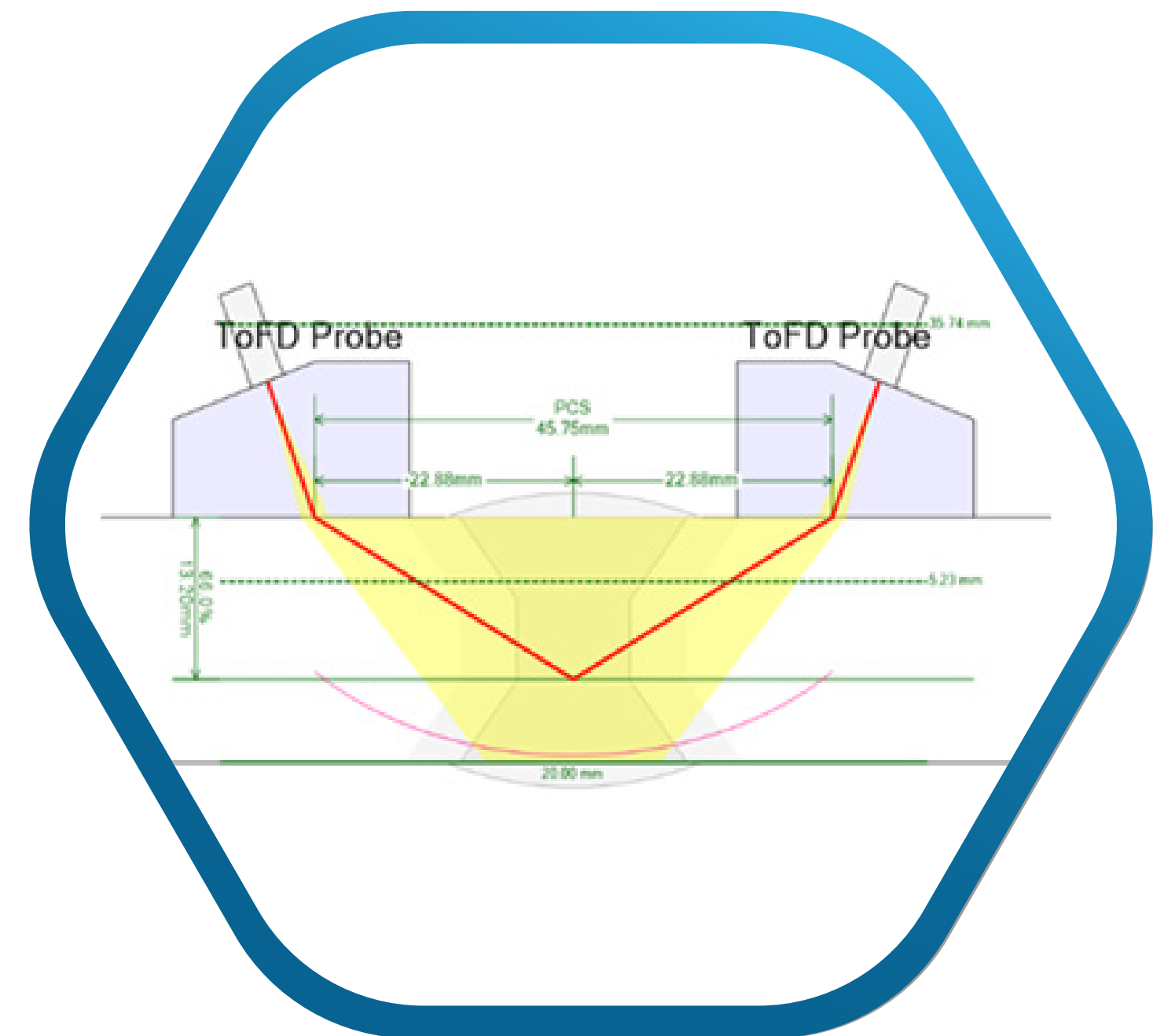
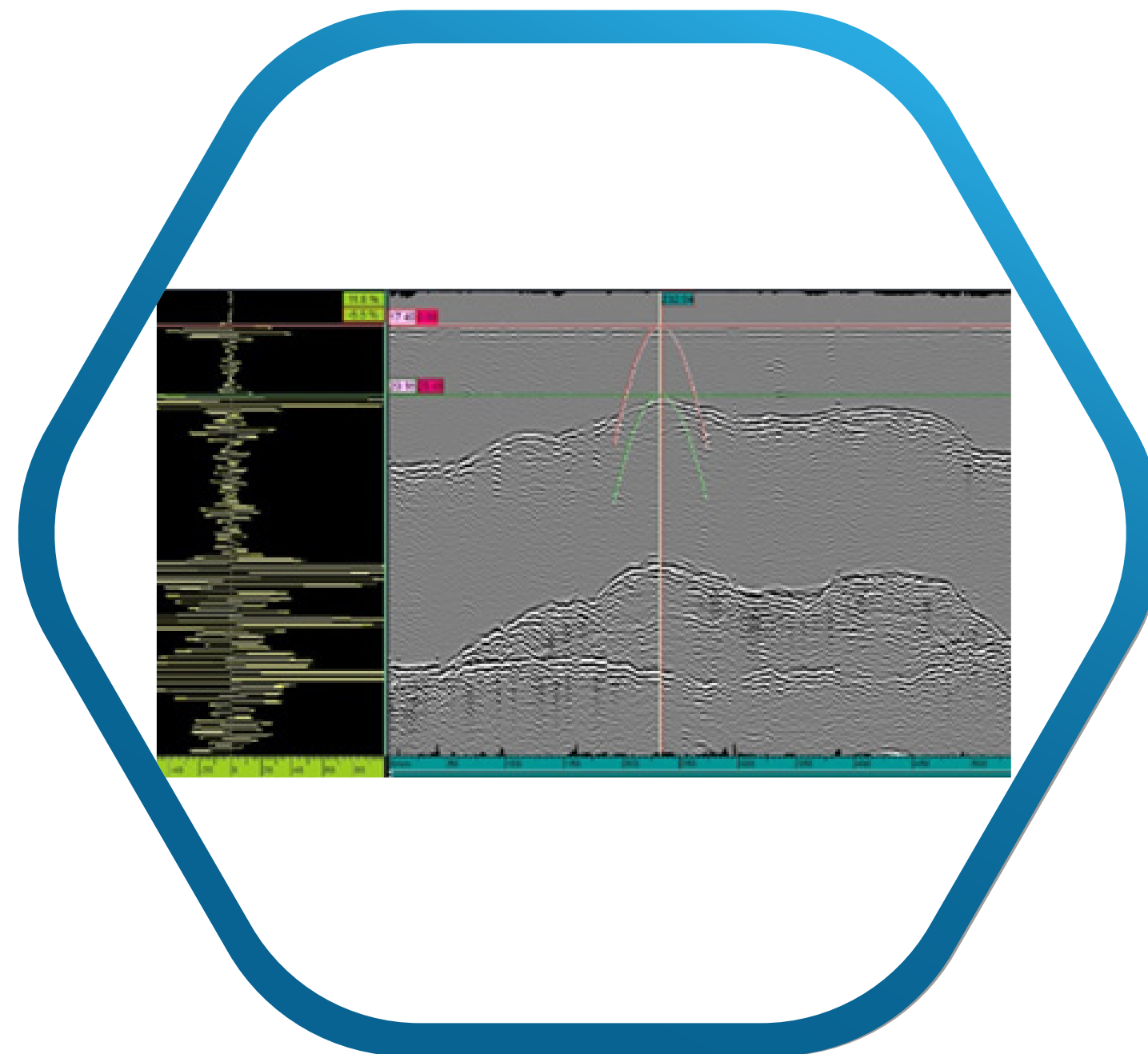
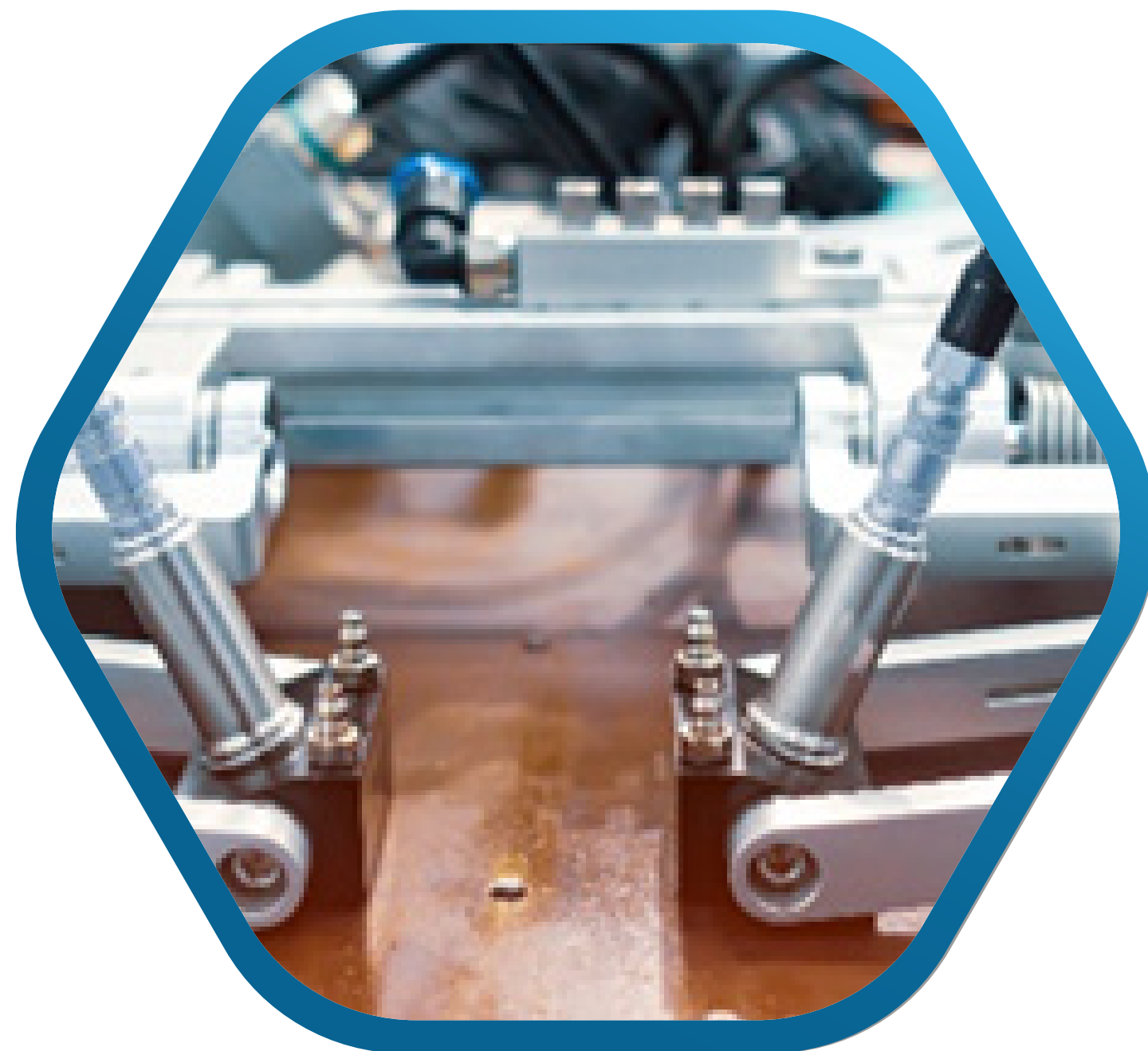
Phased Array Ultrasonic Testing (PAUT)

PAUT is a recognized and trusted method for volumetric inspection, offering an advanced form of ultrasonic testing that significantly reduces inspection time. By collecting multiple angle ultrasonic data in a single pass, typically from either side of a weld, PAUT enables efficient and accurate inspection of welds, small bore pipes, bolts, and flanges, while also supporting corrosion mapping, defect characterization and sizing, and integration with ToFD.



Time of Flight Diffraction (ToFD)

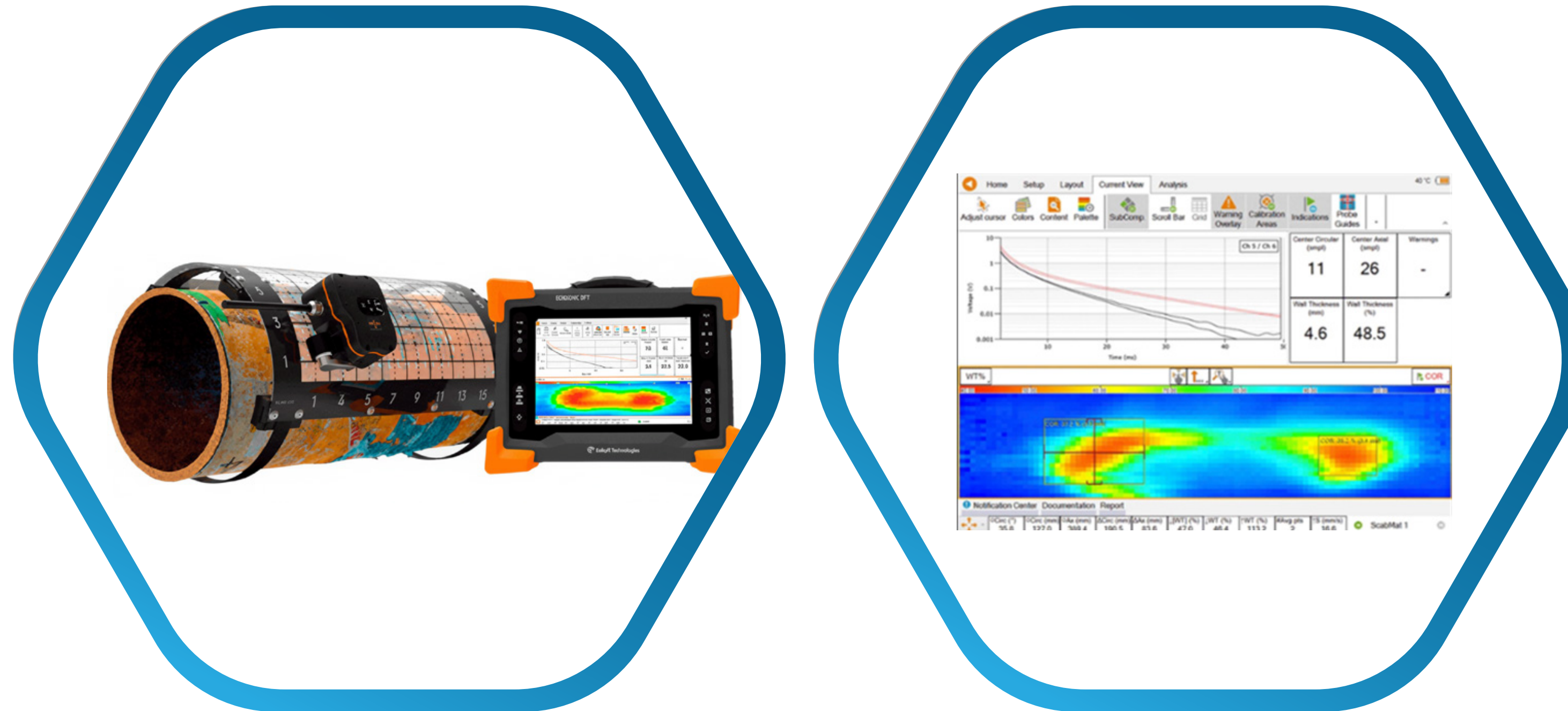
ToFD is an advanced ultrasonic inspection technique that utilizes tip-diffracted signals generated when ultrasonic energy interacts with discontinuities, such as cracks, within a weld. This makes it an ideal solution for detecting and sizing defects, particularly in complex weld geometries, weld root erosion (WRE), and in-service cracking.



Topside NDT Solutions

Pulsed Eddy Current Testing (PECT)

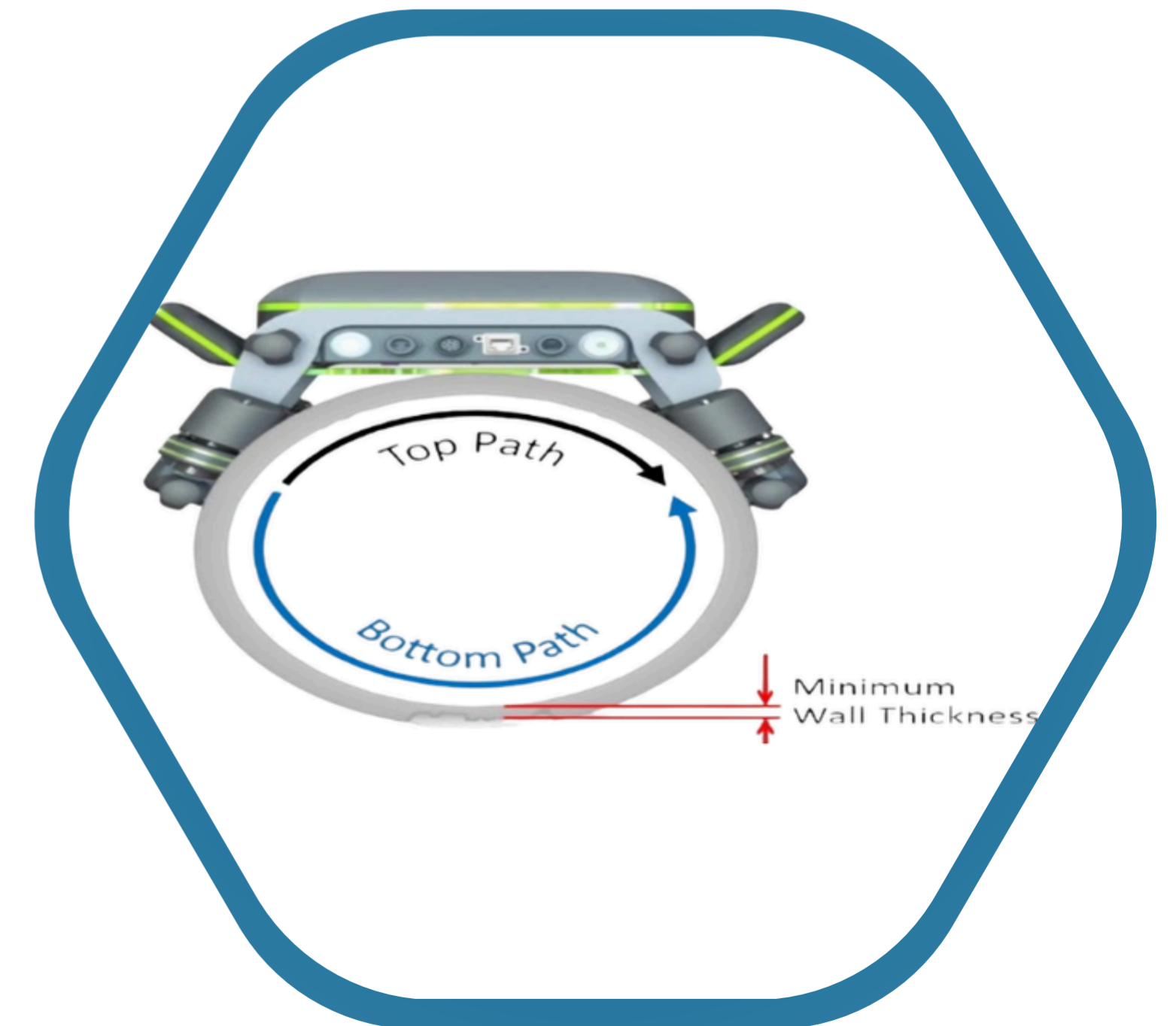
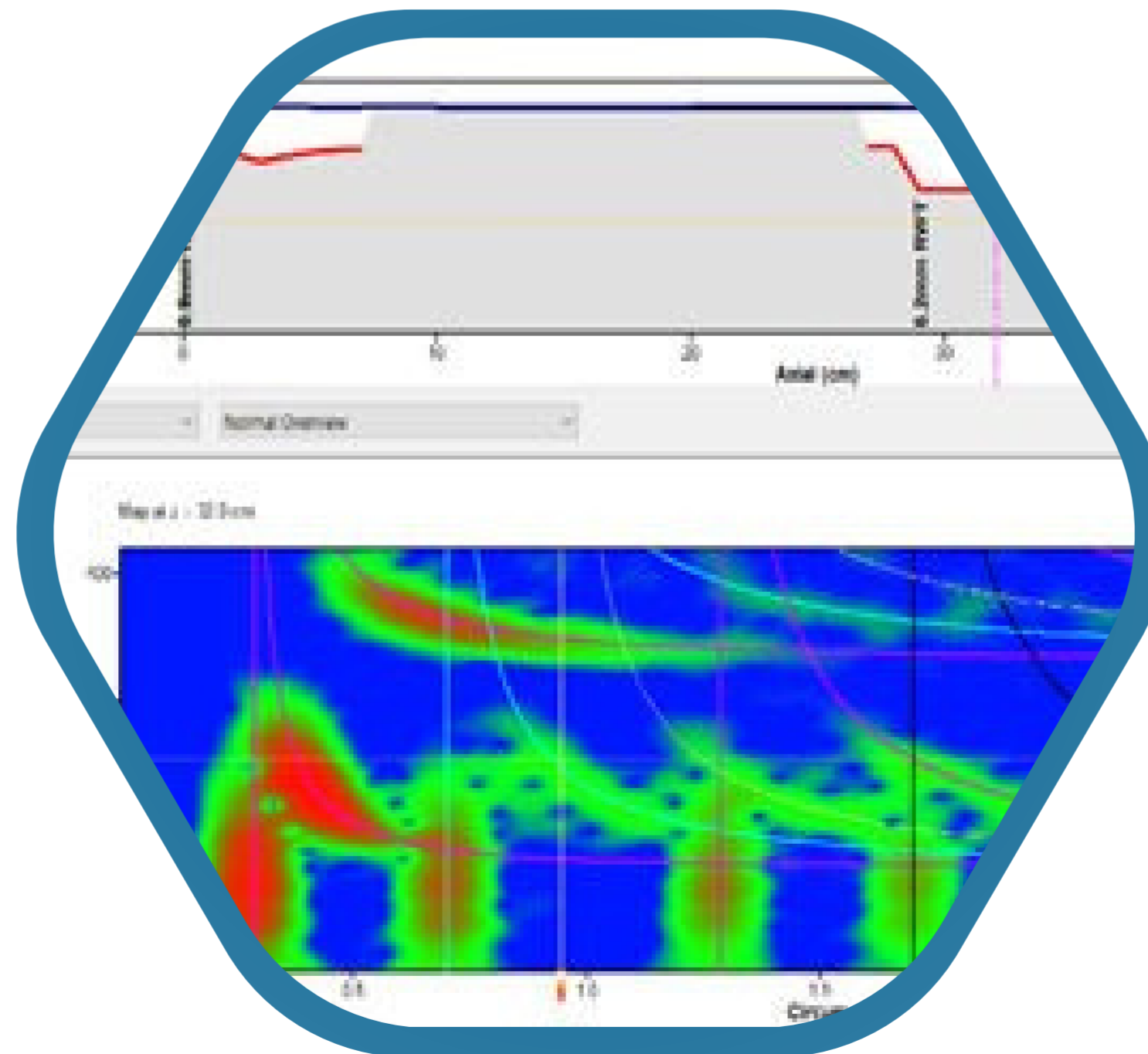
PECT is an electromagnetic technique used to measure wall thickness of conductive materials without the need for direct surface access. PEC is ideal for detecting corrosion under insulation (CUI) and fireproofing (CUF), inspecting various metal jackets, storage tank annular plates, underwater and splash zone structures, and marine vessels.



Topside NDT Solutions

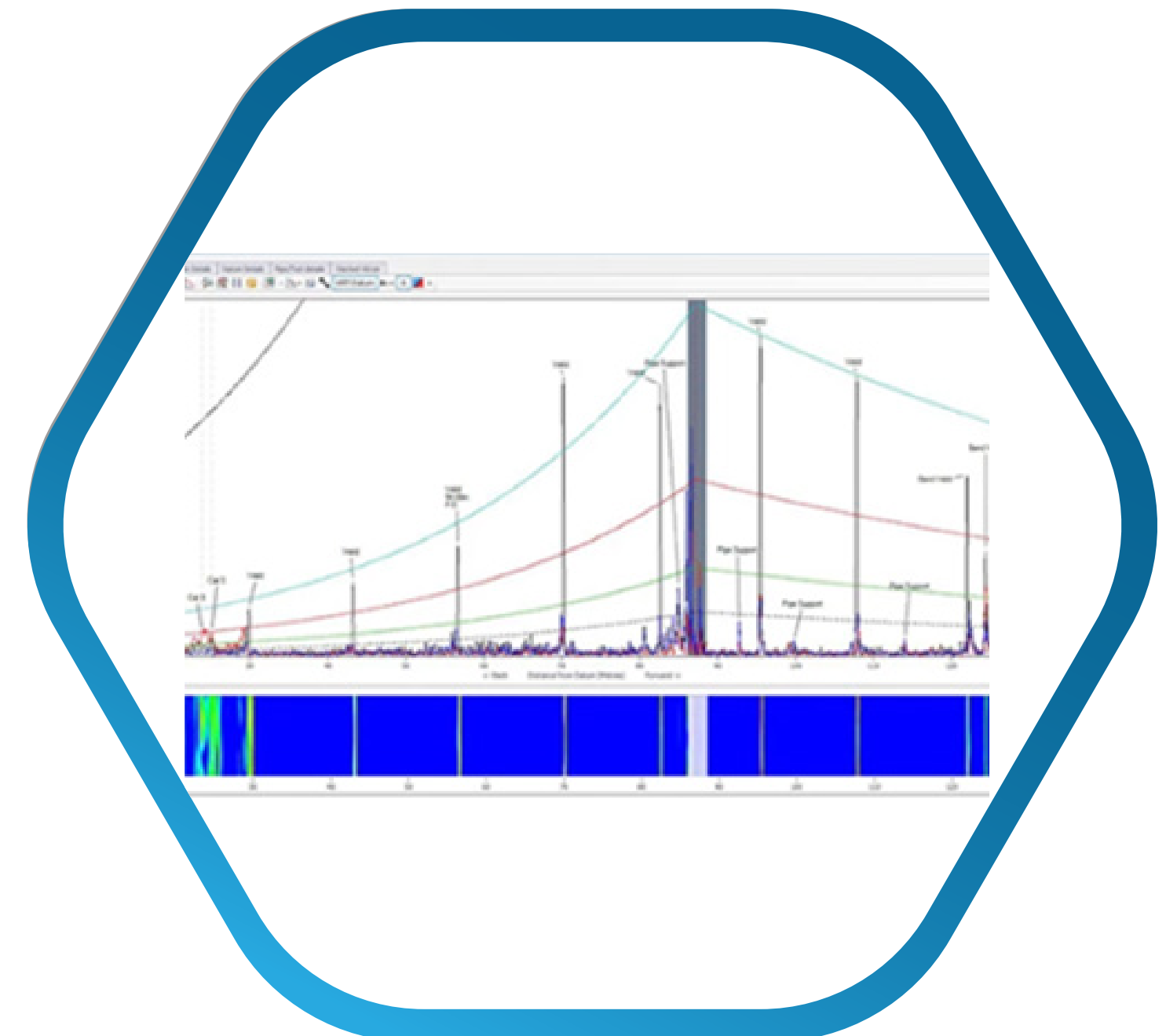
Electro Magnetic Acoustic Transducer (EMAT)

EMAT is an advanced Ultrasonic Testing (UT) technique that generates sound directly within the material being inspected, rather than from the transducer. It is particularly effective for corrosion under pipe supports (CUPS), inspections of extremely hot or cold parts, and guided wave inspections.



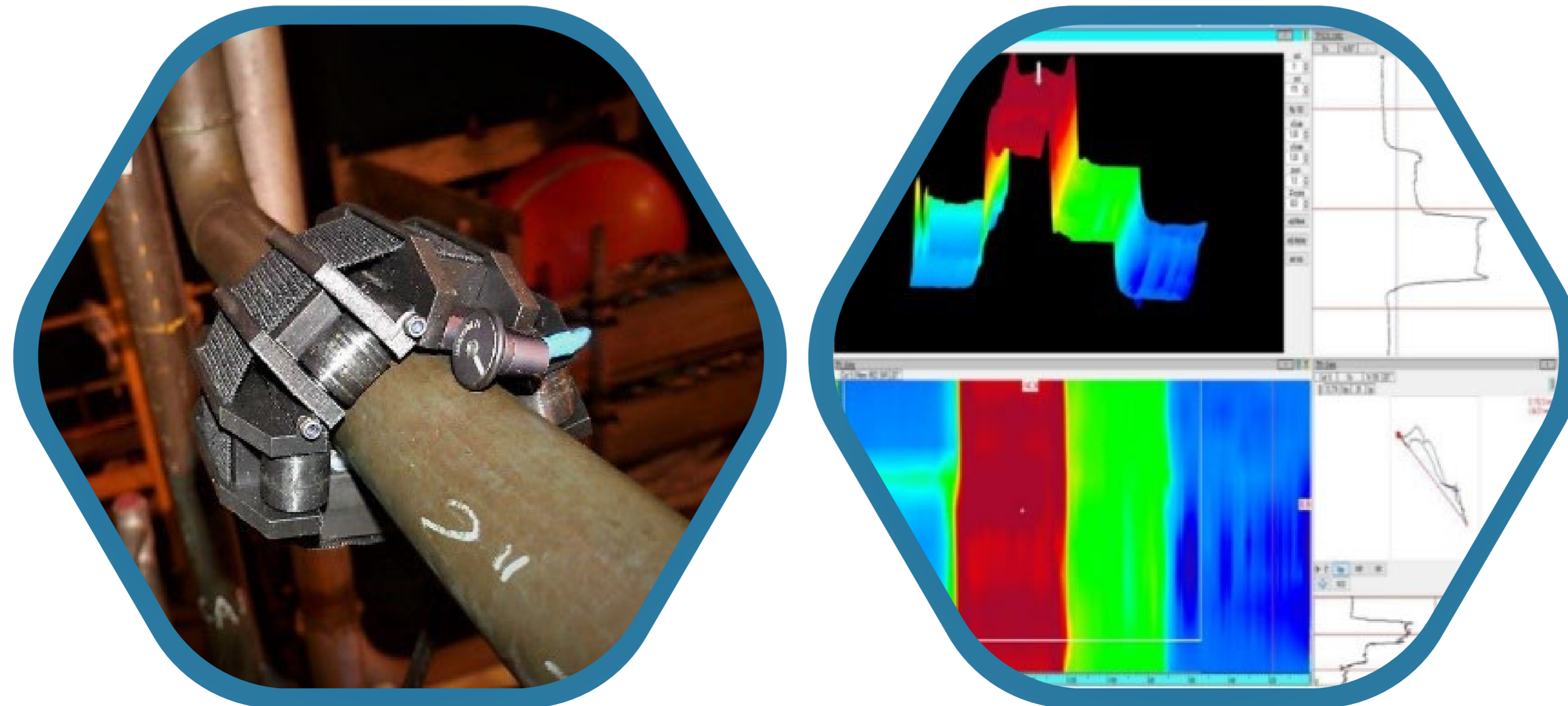
Long Range Ultrasonic Testing (LRUT)

LRUT is a guided-wave inspection system designed for rapid screening of long pipe sections and can perform inspections while plants remain in operation. It can detect external and internal corrosion as well as axial and circumferential cracking, making it ideal for corrosion under insulation (CUI), offshore caisson inspection, buried pipelines, elevated temperature pipework, and river and road crossings.



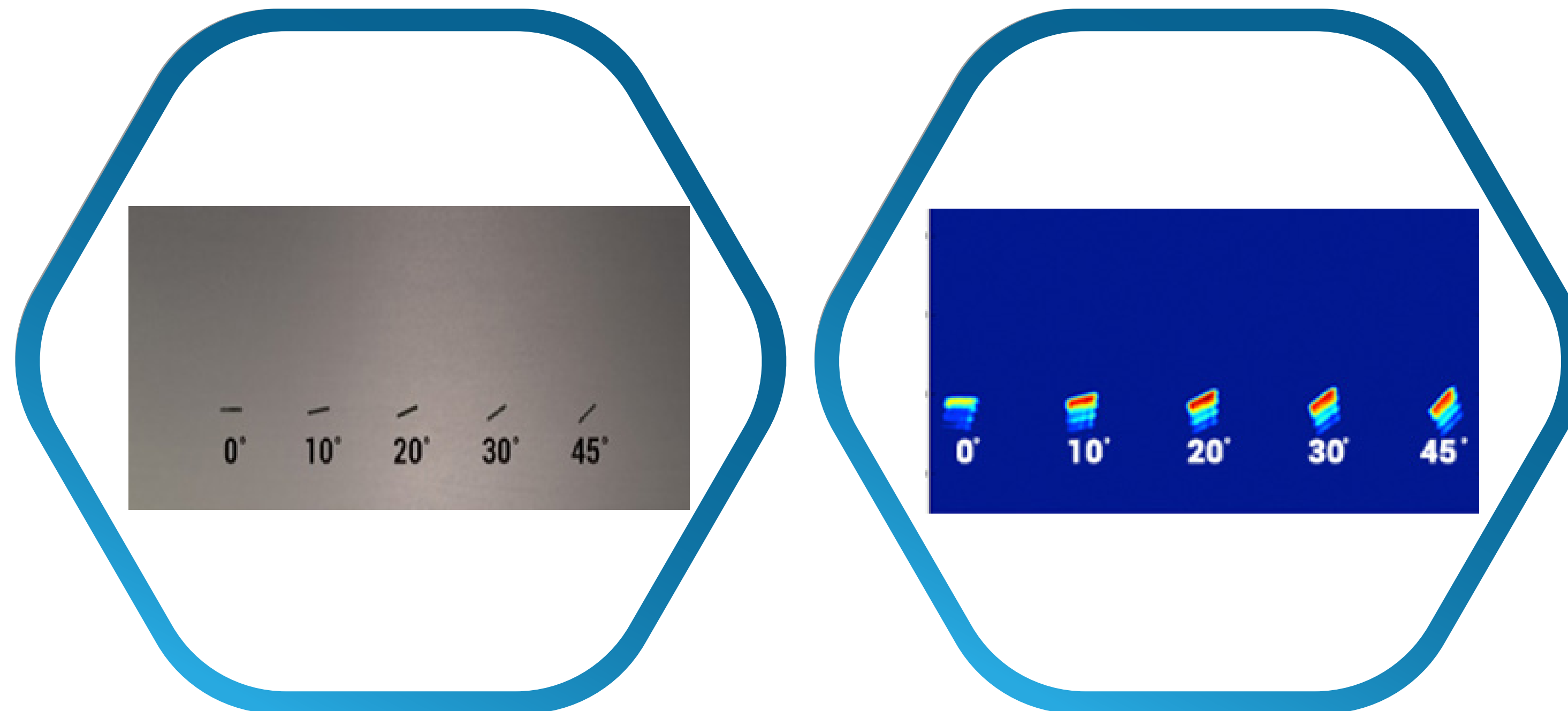
Eddy Current Array (ECA)

ECA is a non-destructive testing technology that provides the ability to electronically drive multiple eddy current coils. Corrosion detection using eddy current array technology offers major advantages because each individual eddy current coil in the probe produces a signal relative to the phase and amplitude of the structure below it. Thus, the coils can detect very small changes in material thickness, and other parameters, and display these changes as a colour-coded C-scan image.



Full Matrix Capture (FMC) & Total Focusing Method (TFM)

is an advanced data acquisition strategy that collects all possible transmit and receive combinations from an array of ultrasonic transducers, generating a comprehensive matrix of elementary A-scans. TFM processes this data into high-resolution images, enabling precise detection and characterization of flaws. FMC/TFM is particularly effective for in-service inspection, high temperature hydrogen attack (HTHA) detection, complex flaw geometries, and critical asset inspection.



ROV Tooling



Standard & Custom Tooling

- ✔ Class I–IV Torque Tools.
- ✔ FLOTS (Flying Lead Orientation Tools).
- ✔ Torque Verification Buckets.
- ✔ ROV Valves and Docking Probes.
- ✔ Belly and Backpack Skids.
- ✔ Bespoke tooling with technical support.



Cleaning Equipment

- ✔ Cleaning Brush.
- ✔ Wellhead cleaning tool.



Cutting Equipment

- ✔ Specialist conductor cutting for 20" pipes.
- ✔ HCV270 Refurbishment and Upgrade.
- ✔ Compact DWS system designed for operations with as little as 100 mm clearance on one side and 750 mm on the other.

Our Clients




PMS is an approved Service Provider with ADNOC, AD Ports, NMDC, and others.



Get in Touch Thank You!

Contact Us



-  Office 1103, 11th Floor, New Global Tower, Electra St., Abu Dhabi, UAE
-  +971 2 546 3735
-  info@portomarines.com

